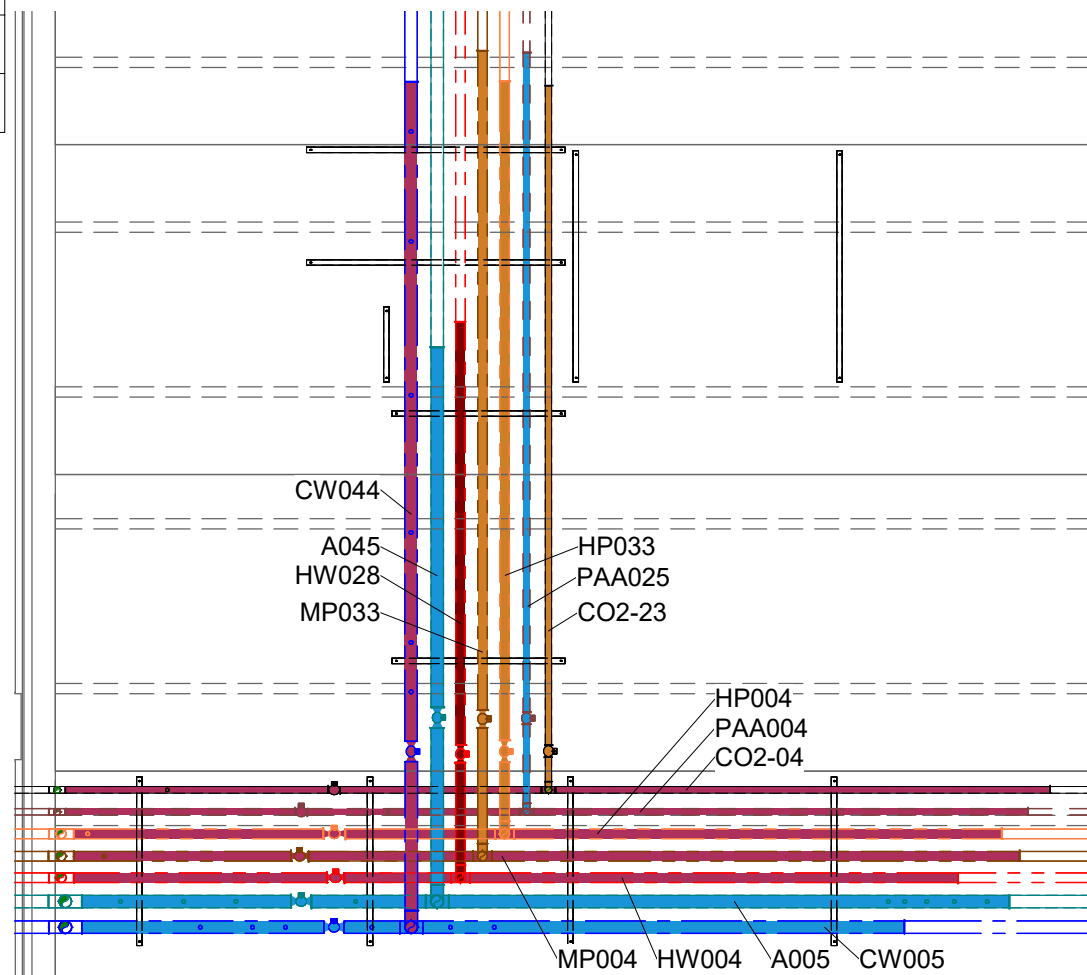
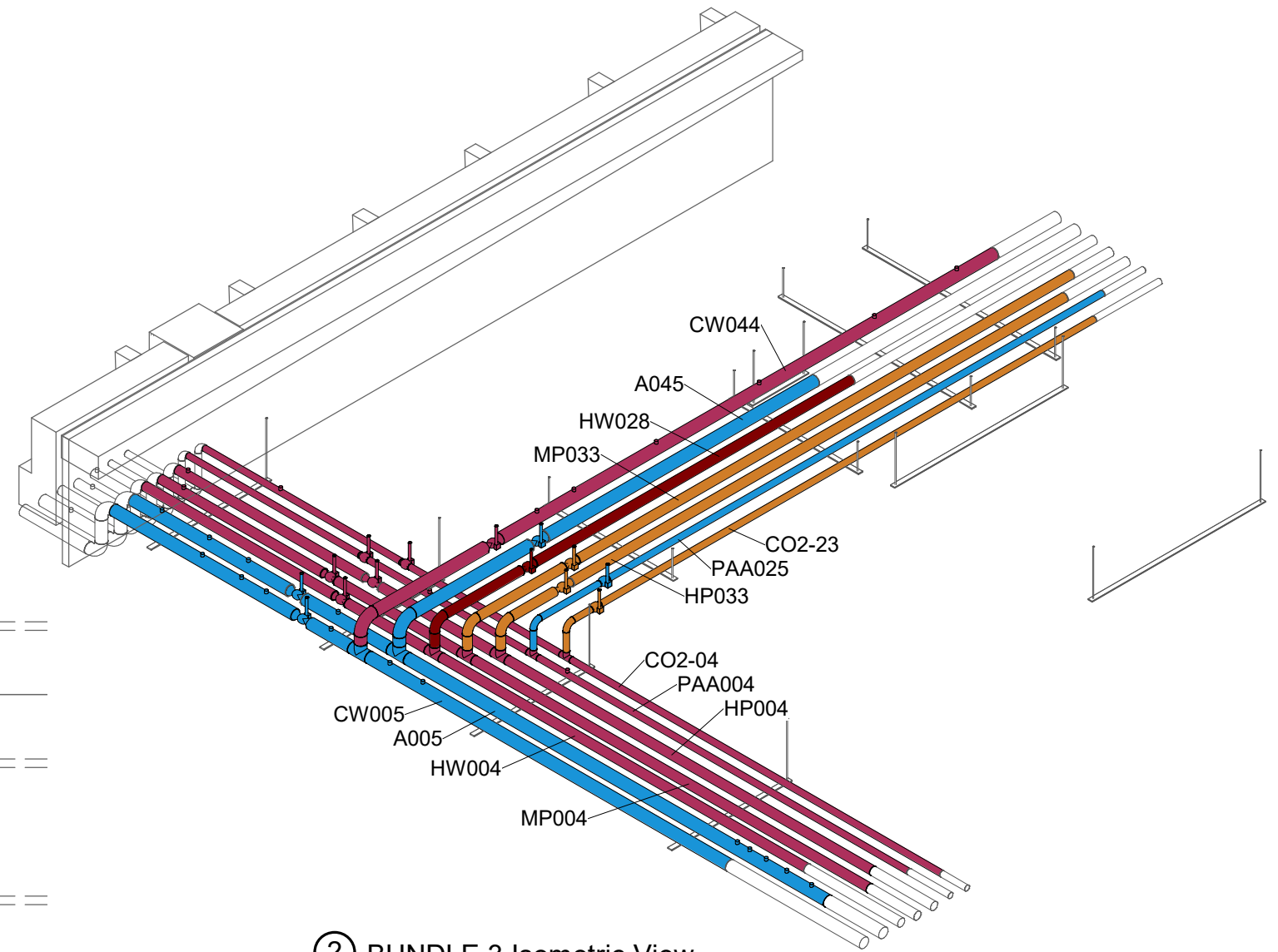


A005	■
A045	■
CO2-04	■
CO2-23	■
CW005	■
CW044	■
HP004	■
HP033	■
HW004	■
HW028	■
MP004	■
MP033	■
PAA004	■
PAA025	■



① BUNDLE 3 Plan View



② BUNDLE 3 Isometric View

Tags Legend	
①	Pipe Tags
②	Fitting and Accessory Tags
③	Joint Tags

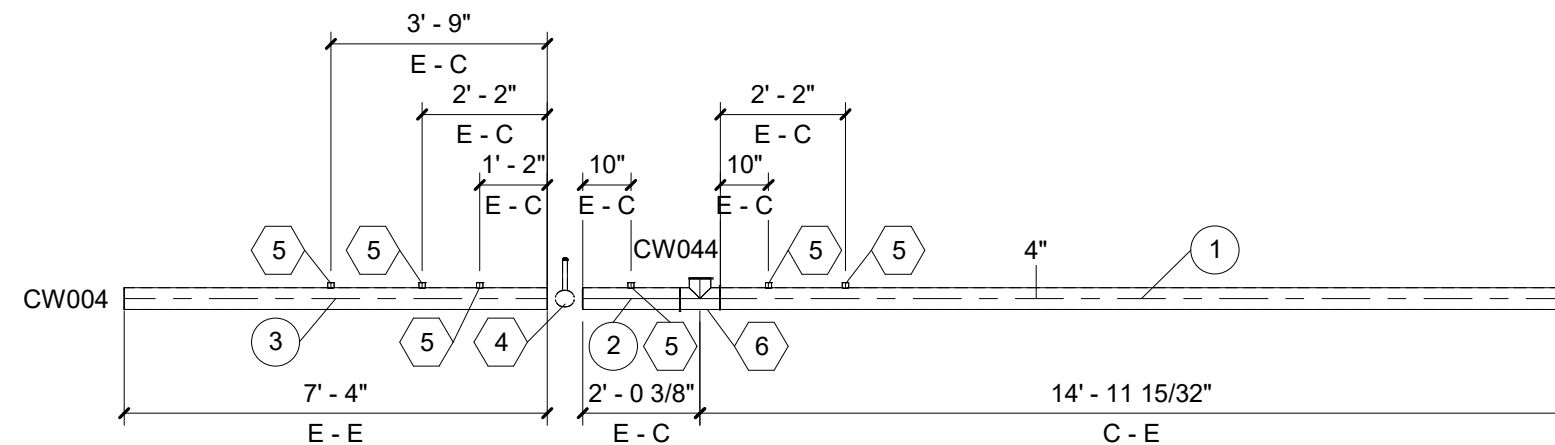
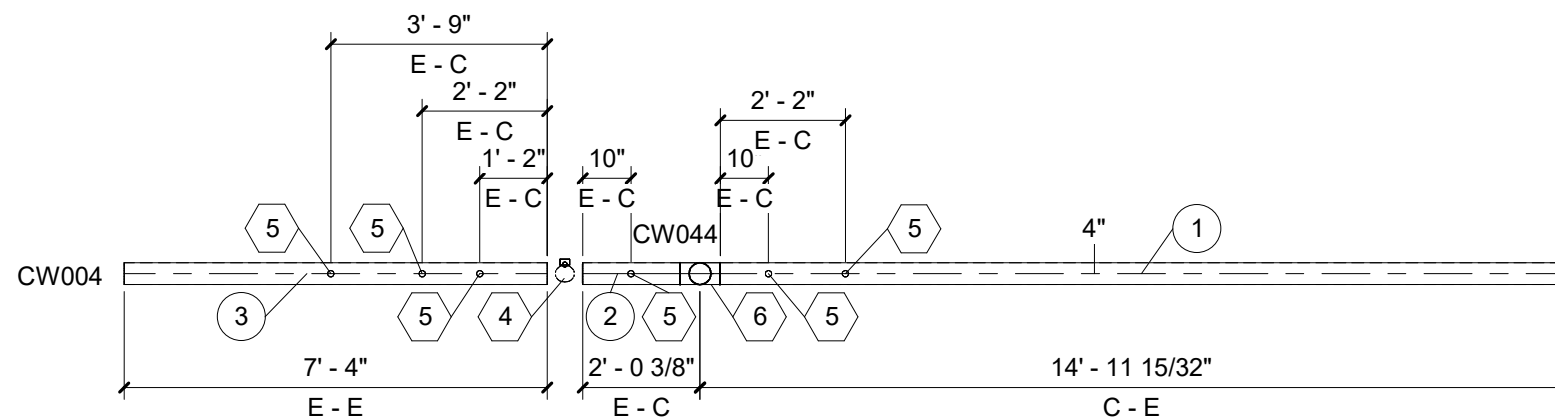
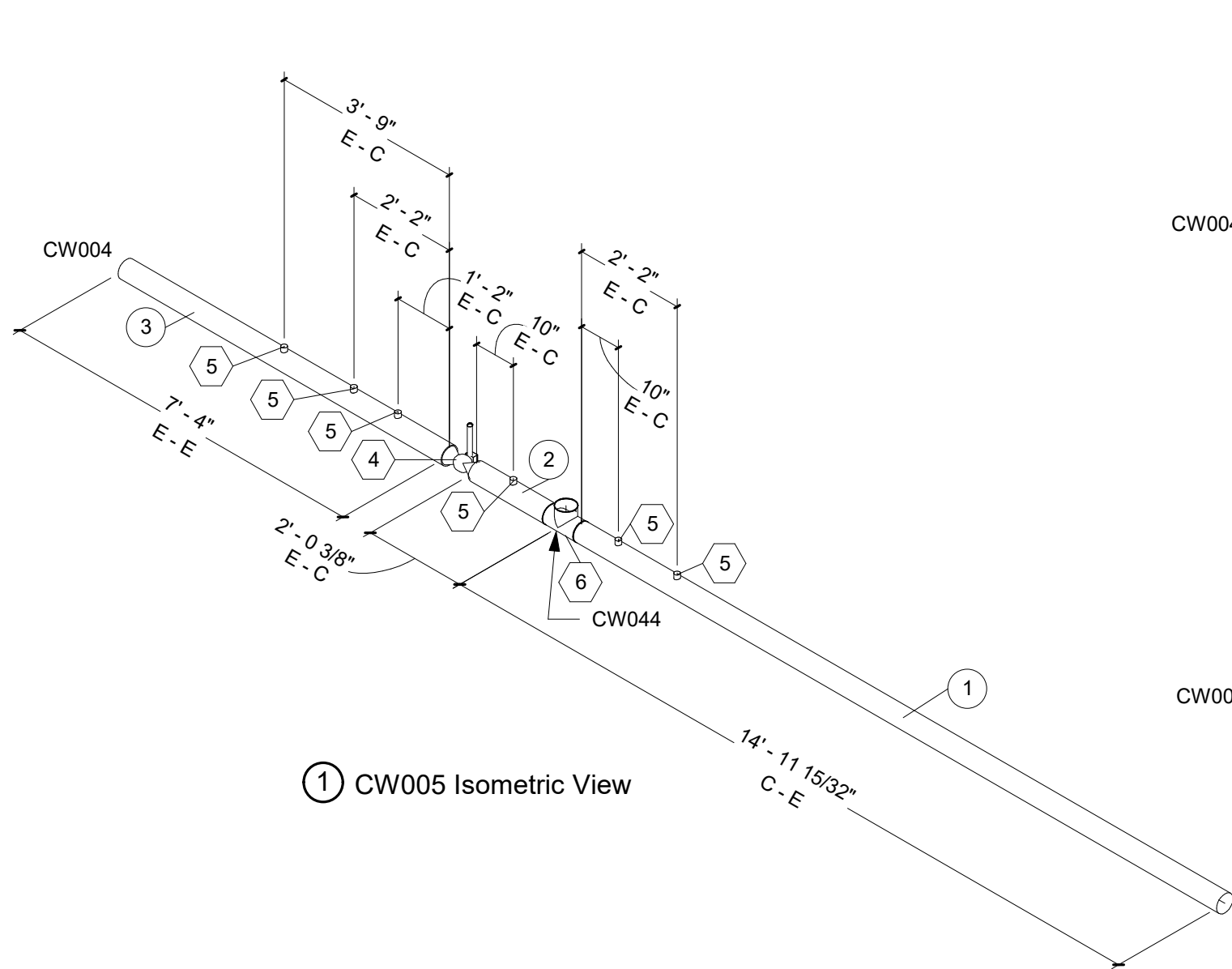
	<table border="1"> <thead> <tr> <th colspan="3">REVISION SCHEDULE</th> </tr> <tr> <th>DATE</th> <th>DESCRIPTION</th> <th>BY</th> </tr> </thead> <tbody> <tr><td> </td><td> </td><td> </td></tr> <tr><td> </td><td> </td><td> </td></tr> </tbody> </table>	REVISION SCHEDULE			DATE	DESCRIPTION	BY							THIS DOCUMENT IS THE PROPERTY OF I & S GROUP, INC. AND MAY NOT BE USED, COPIED OR DUPLICATED WITHOUT PRIOR WRITTEN CONSENT.	TITLE <b>BUNDLE 3 SPOOL MAP</b>		
	REVISION SCHEDULE																
DATE	DESCRIPTION	BY															
<table border="1"> <tr><td>PROJECT NO.</td><td>20-24496</td></tr> <tr><td>FILE NAME</td><td>24496 Mech R20.rvt</td></tr> <tr><td>DRAWN BY</td><td>CHP</td></tr> <tr><td>DESIGNED BY</td><td>CHP</td></tr> <tr><td>REVIEWED BY</td><td>AJE</td></tr> <tr><td>ORIGINAL ISSUE DATE</td><td>01/05/21</td></tr> <tr><td>CLIENT PROJECT NO.</td><td> </td></tr> </table>	PROJECT NO.	20-24496	FILE NAME	24496 Mech R20.rvt	DRAWN BY	CHP	DESIGNED BY	CHP	REVIEWED BY	AJE	ORIGINAL ISSUE DATE	01/05/21	CLIENT PROJECT NO.		PROJECT <b>PILGRIM'S PRIDE</b> <b>PROCESS PIPING</b>	COLD SPRING MINNESOTA	SHEET <b>BUNDLE 3</b>
PROJECT NO.	20-24496																
FILE NAME	24496 Mech R20.rvt																
DRAWN BY	CHP																
DESIGNED BY	CHP																
REVIEWED BY	AJE																
ORIGINAL ISSUE DATE	01/05/21																
CLIENT PROJECT NO.																	

# Cut List

Tag#	Size	Length	End #1	End #2	Material
1	4"	14' - 7 7/32"	Plain End	Plain End	Sched 10 304 SS
2	4"	1' - 8 1/8"	Plain End	Plain End	Sched 10 304 SS
3	4"	7' - 4"	Plain End	Plain End	Sched 10 304 SS

# Bill Of Materials

Tag#	Qty	Size	Description	Material
4	1	4"	ASTM A351 CF8M 1000 psi Ball Valve	Stainless Steel
5	6	1"x4"	Olet (1 x 4)	304 SS
6	1	4"	Tee Equal	Sched 10 304 SS



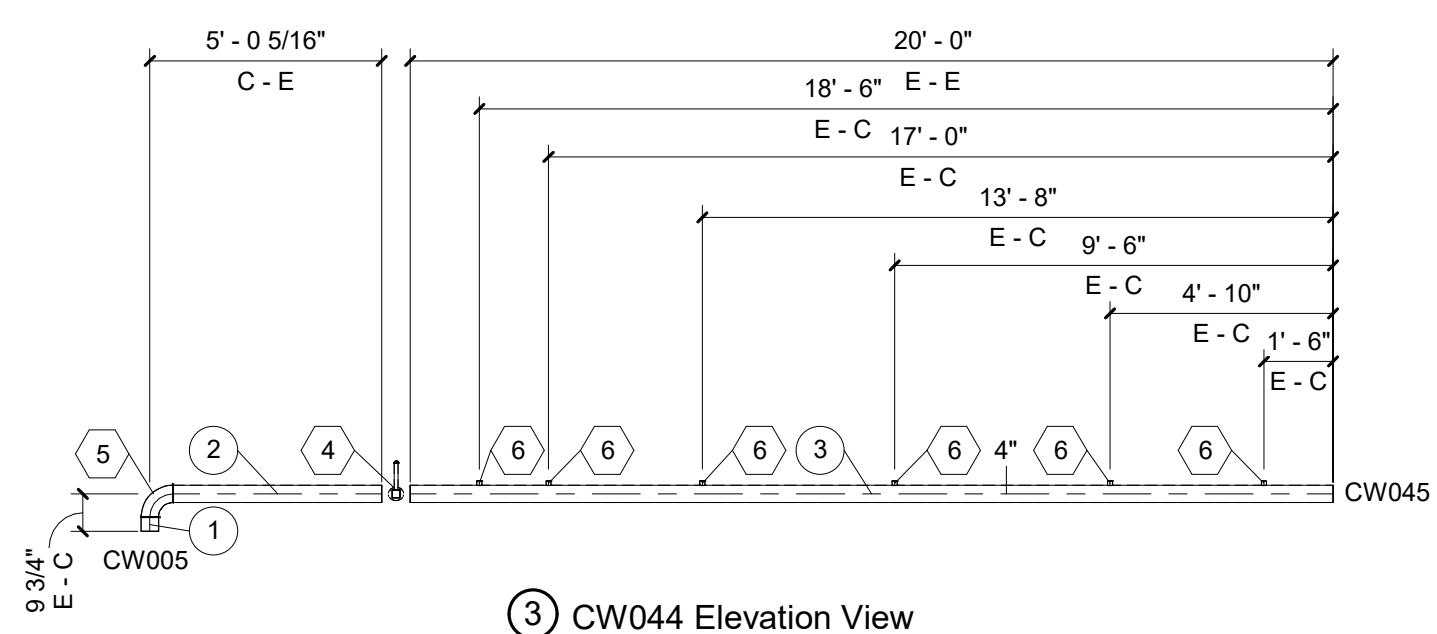
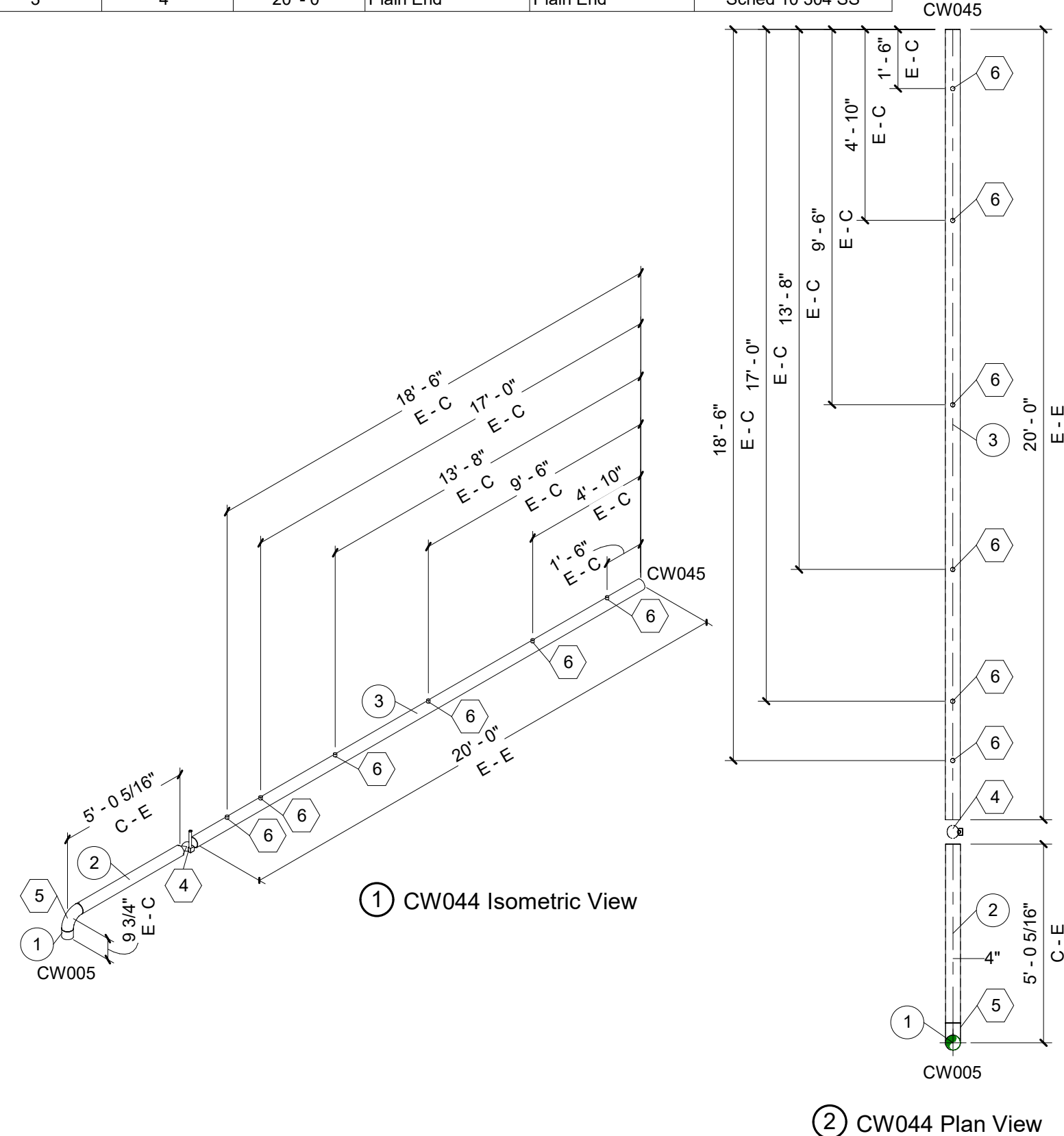
Socket Weld Ball Valve Dimensions Modeled			Tags Legend
4" Std. Press.	8 7/8" Long O.A.	3/4" Deep Socket	① Pipe Tags ② Fitting and Accessory Tags ③ Joint Tags
3" Std. Press.	7 7/16" Long O.A.	5/8" Deep Socket	
2" Std. Press.	5 1/2" Long O.A.	5/8" Deep Socket	
3" High Press.	10" Long O.A.	1" Deep Socket	
2" High Press.	6 5/8" Long O.A.	5/8" Deep Socket	
Pipe cut lengths are to bottom of valve socket  High pressure valves are only shown on HP system			
	REVISION SCHEDULE DATE DESCRIPTION BY		TITLE <b>BUNDLE 3 - SPOOL CW005</b>  <b>PROCESS PIPING</b>  SHEET <b>CW005</b>
	PROJECT NO. 20-24496 FILE NAME 24496 Mech R20.rvt DRAWN BY CHP DESIGNED BY CHP REVIEWED BY AJE ORIGINAL ISSUE DATE 01/05/21 CLIENT PROJECT NO.		
	THIS DOCUMENT IS THE PROPERTY OF I & S GROUP, INC. AND MAY NOT BE USED, COPIED OR DUPLICATED WITHOUT PRIOR WRITTEN CONSENT.		
	PROJECT <b>PILGRIM'S PRIDE</b> <b>PROCESS PIPING</b>		
	COLD SPRING MINNESOTA		
	PROJECT NO. 20-24496 FILE NAME 24496 Mech R20.rvt DRAWN BY CHP DESIGNED BY CHP REVIEWED BY AJE ORIGINAL ISSUE DATE 01/05/21 CLIENT PROJECT NO.		

# Cut List

Tag#	Size	Length	End #1	End #2	Material
1	4"	3 5/8"	Plain End	Plain End	Sched 10 304 SS
2	4"	4' - 6 3/16"	Plain End	Plain End	Sched 10 304 SS
3	4"	20' - 0"	Plain End	Plain End	Sched 10 304 SS

# Bill Of Materials

Tag#	Qty	Size	Description	Material
4	1	4"	ASTM A351 CF8M 1000 psi Ball Valve	Stainless Steel
5	1	4"	Elbow 90 LR	Sched 10 304 SS
6	6	1"x4"	Olet (1 x 4)	304 SS



Socket Weld Ball Valve Dimensions Modeled			Tags Legend
4" Std. Press.	8 7/8" Long O.A.	3/4" Deep Socket	Pipe cut lengths are to bottom of valve socket
3" Std. Press.	7 7/16" Long O.A.	5/8" Deep Socket	
2" Std. Press.	5 1/2" Long O.A.	5/8" Deep Socket	High pressure valves are only shown on HP system
3" High Press.	10" Long O.A.	1" Deep Socket	
2" High Press.	6 5/8" Long O.A.	5/8" Deep Socket	

DATE	DESCRIPTION	BY

	PROJECT NO.	20-24496
	FILE NAME	24496 Mech R20.rvt
	DRAWN BY	CHP
	DESIGNED BY	CHP
	REVIEWED BY	AJE
ORIGINAL ISSUE DATE	01/05/21	
CLIENT PROJECT NO.		

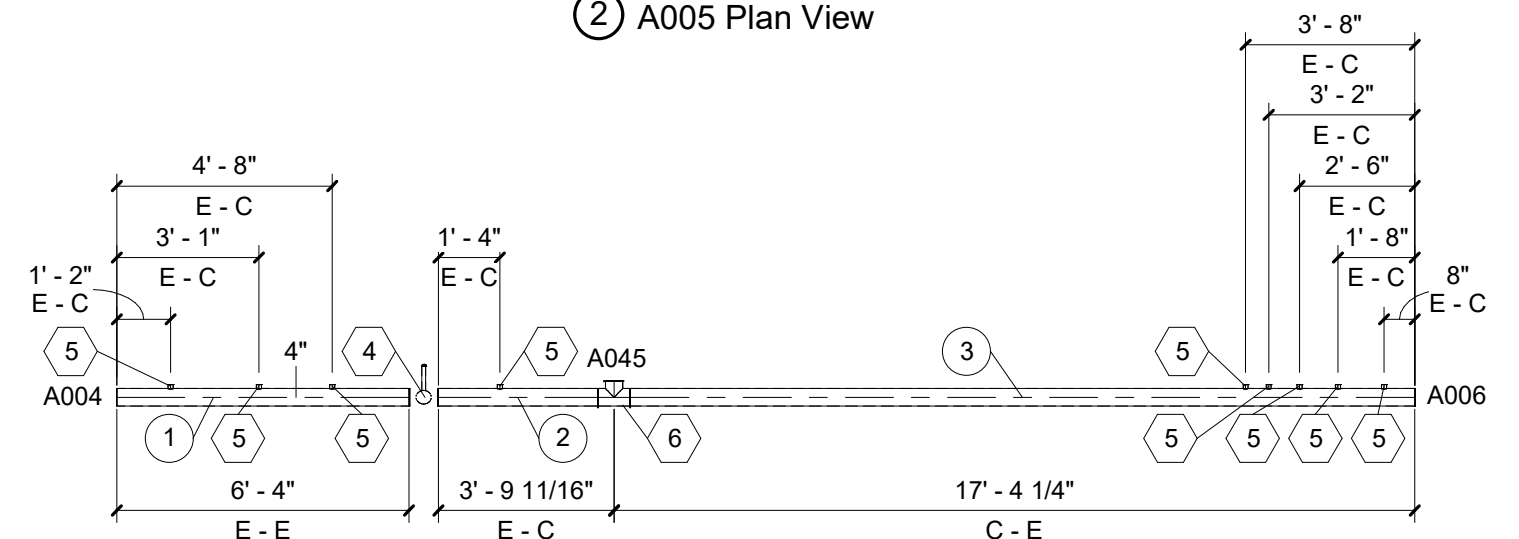
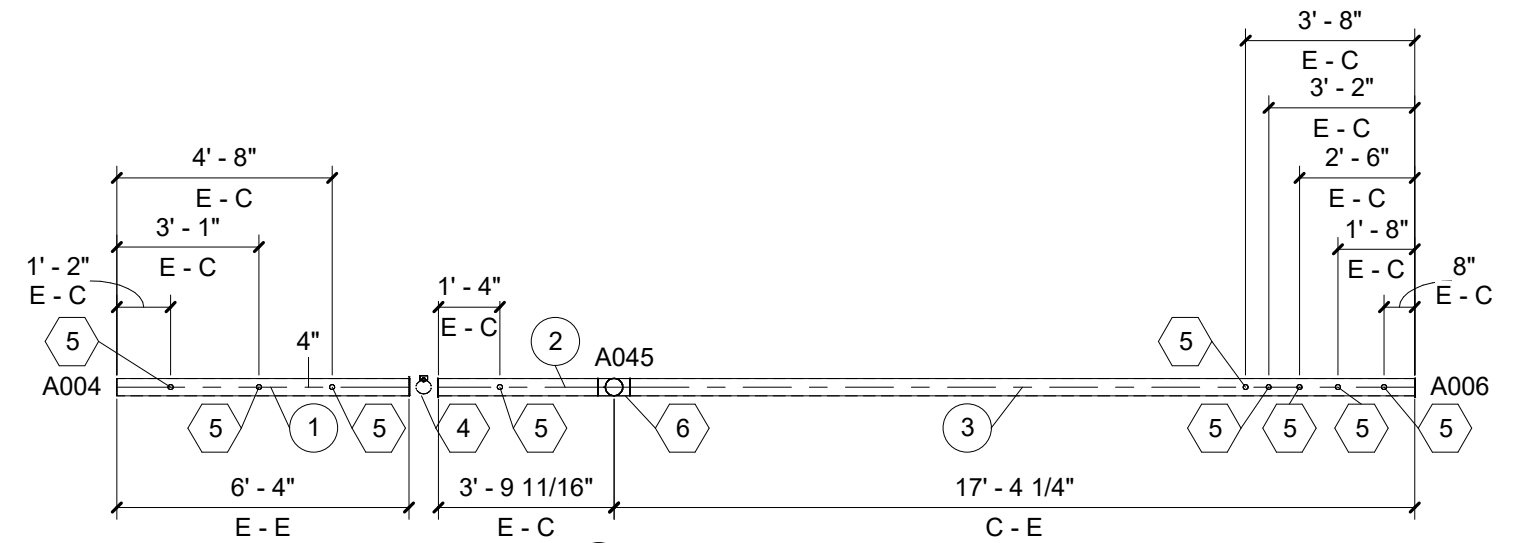
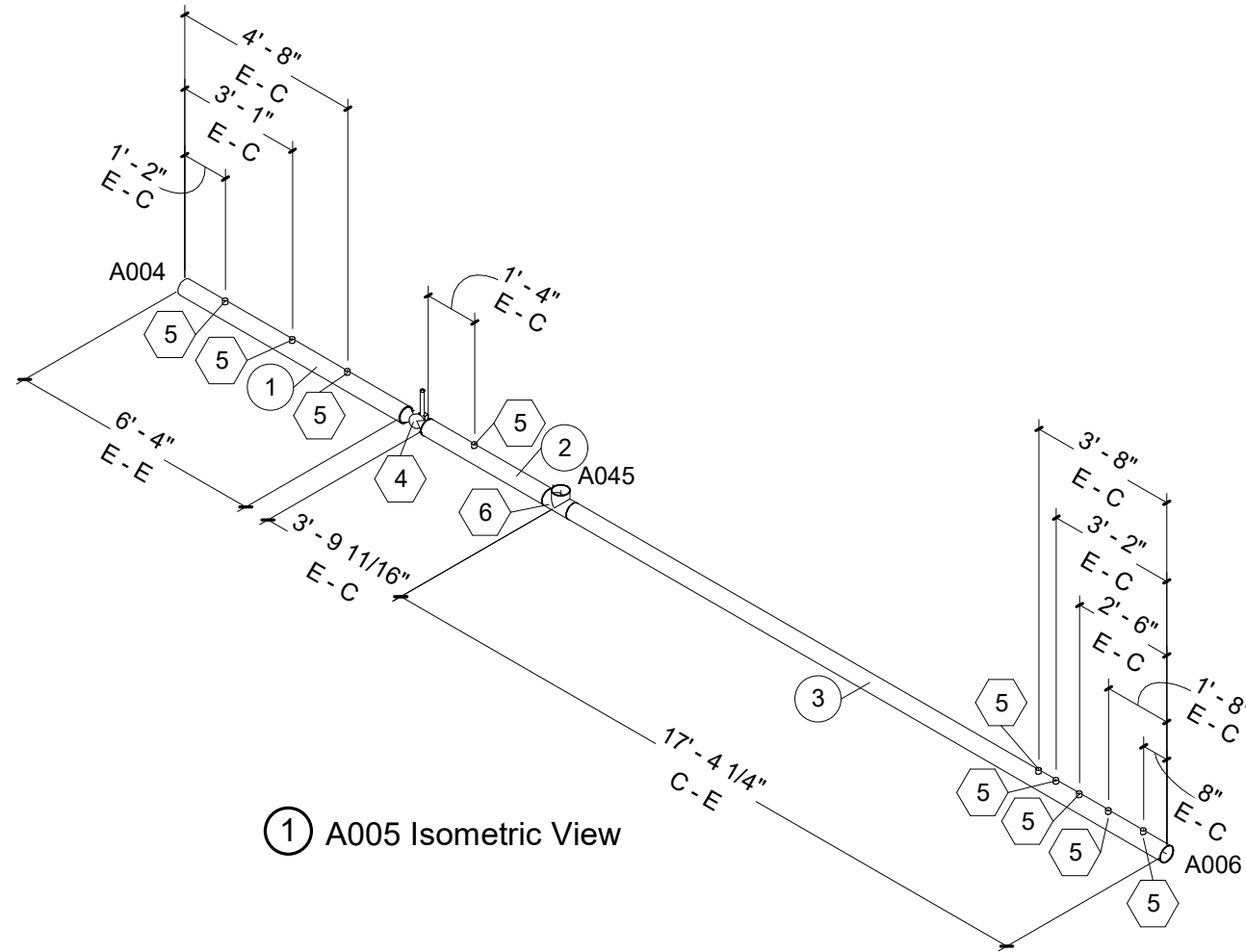
THIS DOCUMENT IS THE PROPERTY OF I & S GROUP, INC. AND MAY NOT BE USED, COPIED OR DUPLICATED WITHOUT PRIOR WRITTEN CONSENT.	TITLE
PROJECT	<b>BUNDLE 3 - SPOOL CW044</b>
<b>PILGRIM'S PRIDE</b>	
<b>PROCESS PIPING</b>	
SHEET	<b>CW044</b>

## Cut List

Tag#	Size	Length	End #1	End #2	Material
1	4"	6' - 4"	Plain End	Plain End	Sched 10 304 SS
2	4"	3' - 5 7/16"	Plain End	Plain End	Sched 10 304 SS
3	4"	17' - 0"	Plain End	Plain End	Sched 10 304 SS

## Bill Of Materials

Tag#	Qty	Size	Description	Material
4	1	4"	ASTM A351 CF8M 1000 psi Ball Valve	Stainless Steel
5	9	1"x4"	Olet (1 x 4)	304 SS
6	1	4"	Tee Equal	Sched 10 304 SS



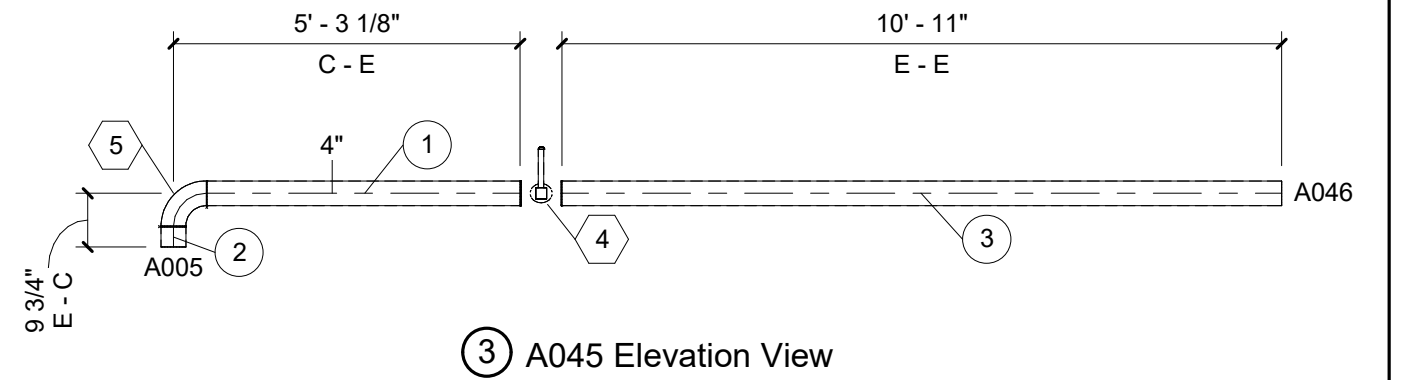
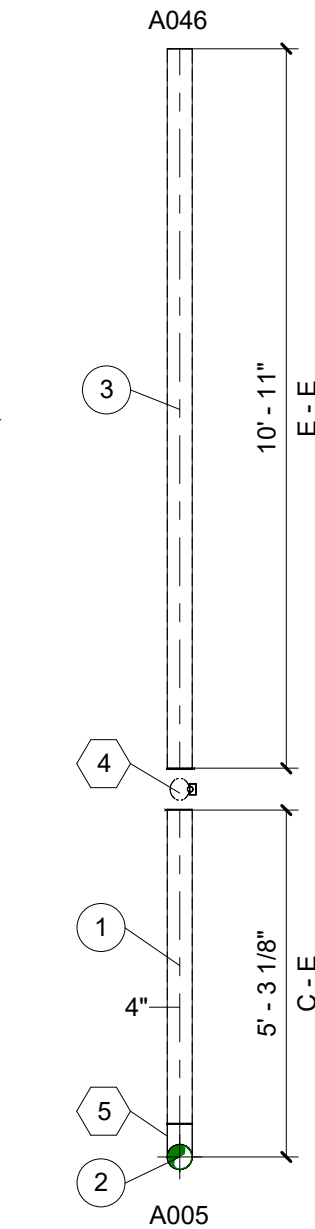
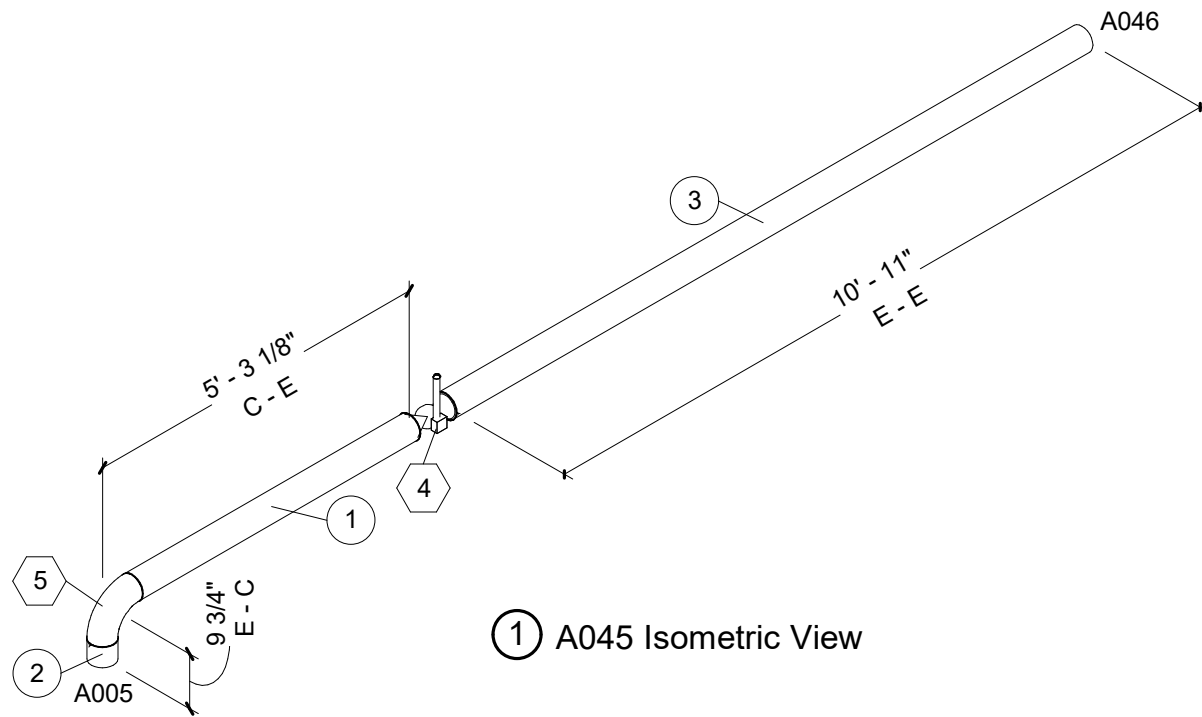
Socket Weld Ball Valve Dimensions Modeled			Tags Legend		
4" Std. Press.	8 7/8" Long O.A.	3/4" Deep Socket	① Pipe Tags ② Fitting and Accessory Tags ③ Joint Tags		
3" Std. Press.	7 7/16" Long O.A.	5/8" Deep Socket			
2" Std. Press.	5 1/2" Long O.A.	5/8" Deep Socket			
3" High Press.	10" Long O.A.	1" Deep Socket			
2" High Press.	6 5/8" Long O.A.	5/8" Deep Socket			
Pipe cut lengths are to bottom of valve socket  High pressure valves are only shown on HP system					
	REVISION SCHEDULE		TITLE  <b>BUNDLE 3 - SPOOL A005</b>  SHEET  <b>A005</b>		
	DATE	DESCRIPTION		BY	
PROJECT NO. 20-24496 FILE NAME 24496 Mech R20.rvt DRAWN BY CHP DESIGNED BY CHP REVIEWED BY AJE ORIGINAL ISSUE DATE 01/05/21 CLIENT PROJECT NO.		THIS DOCUMENT IS THE PROPERTY OF I & S GROUP, INC. AND MAY NOT BE USED, COPIED OR DUPLICATED WITHOUT PRIOR WRITTEN CONSENT.  PROJECT  <b>PILGRIM'S PRIDE</b>  <b>PROCESS PIPING</b>  COLD SPRING MINNESOTA			

## Cut List

Tag#	Size	Length	End #1	End #2	Material
1	4"	4' - 9"	Plain End	Plain End	Sched 10 304 SS
2	4"	3 5/8"	Plain End	Plain End	Sched 10 304 SS
3	4"	10' - 11"	Plain End	Plain End	Sched 10 304 SS

## Bill Of Materials

Tag#	Qty	Size	Description	Material
4	1	4"	ASTM A351 CF8M 1000 psi Ball Valve	Stainless Steel
5	1	4"	Elbow 90 LR	Sched 10 304 SS



### Socket Weld Ball Valve Dimensions Modeled

4" Std. Press.	8 7/8" Long O.A.	3/4" Deep Socket
3" Std. Press.	7 7/16" Long O.A.	5/8" Deep Socket
2" Std. Press.	5 1/2" Long O.A.	5/8" Deep Socket
3" High Press.	10" Long O.A.	1" Deep Socket
2" High Press.	6 5/8" Long O.A.	5/8" Deep Socket

Pipe cut lengths are to bottom of valve socket

High pressure valves are only shown on HP system

### Tags Legend

- ① Pipe Tags
- ② Fitting and Accessory Tags
- ③ Joint Tags



REVISION SCHEDULE		
DATE	DESCRIPTION	BY

THIS DOCUMENT IS THE PROPERTY OF I & S GROUP, INC. AND MAY NOT BE USED, COPIED OR DUPLICATED WITHOUT PRIOR WRITTEN CONSENT.

PROJECT  
**PILGRIM'S PRIDE**  
**PROCESS PIPING**  
COLD SPRING MINNESOTA

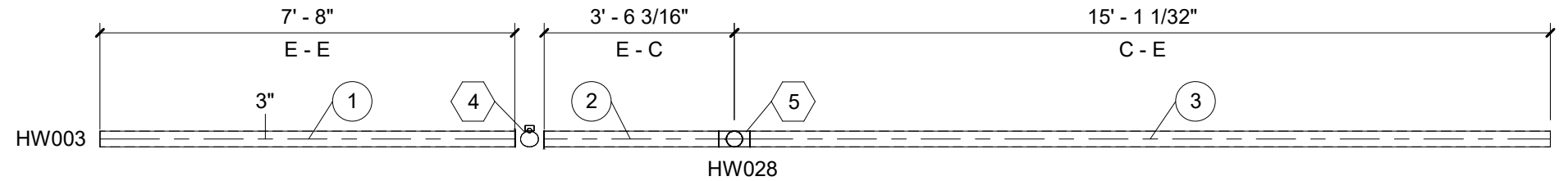
TITLE  
**BUNDLE 3 - SPOOL A045**  
SHEET  
**A045**

## Cut List

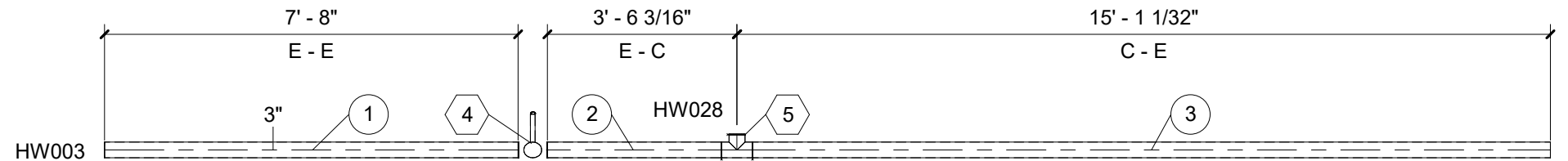
Tag#	Size	Length	End #1	End #2	Material
1	3"	7' - 8"	Plain End	Plain End	Sched 10 304 SS
2	3"	3' - 2 11/16"	Plain End	Plain End	Sched 10 304 SS
3	3"	14' - 9 1/2"	Plain End	Plain End	Sched 10 304 SS

## Bill Of Materials

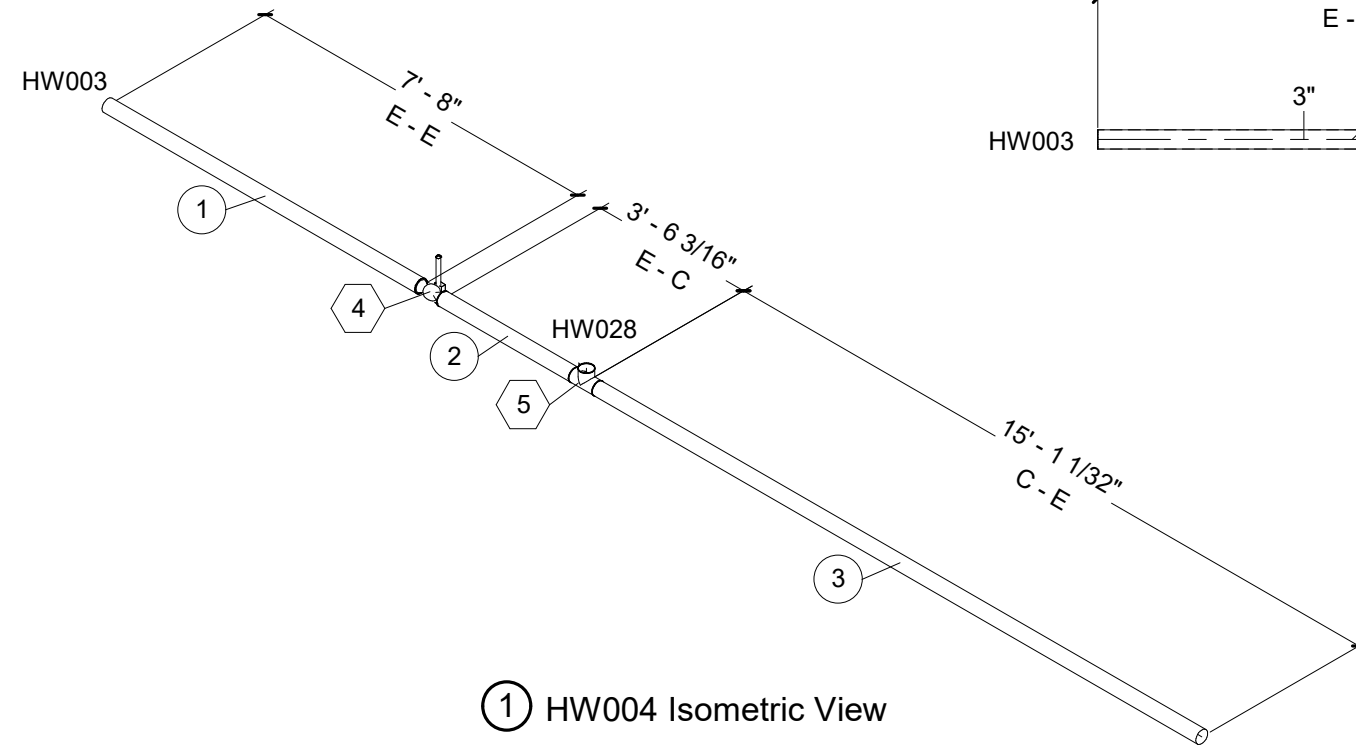
Tag#	Qty	Size	Description	Material
4	1	3"	ASTM A351 CF8M 1000 psi Ball Valve	Stainless Steel
5	1	3"	Tee Equal	Sched 10 304 SS



② HW004 Plan View



③ HW004 Elevation View



① HW004 Isometric View

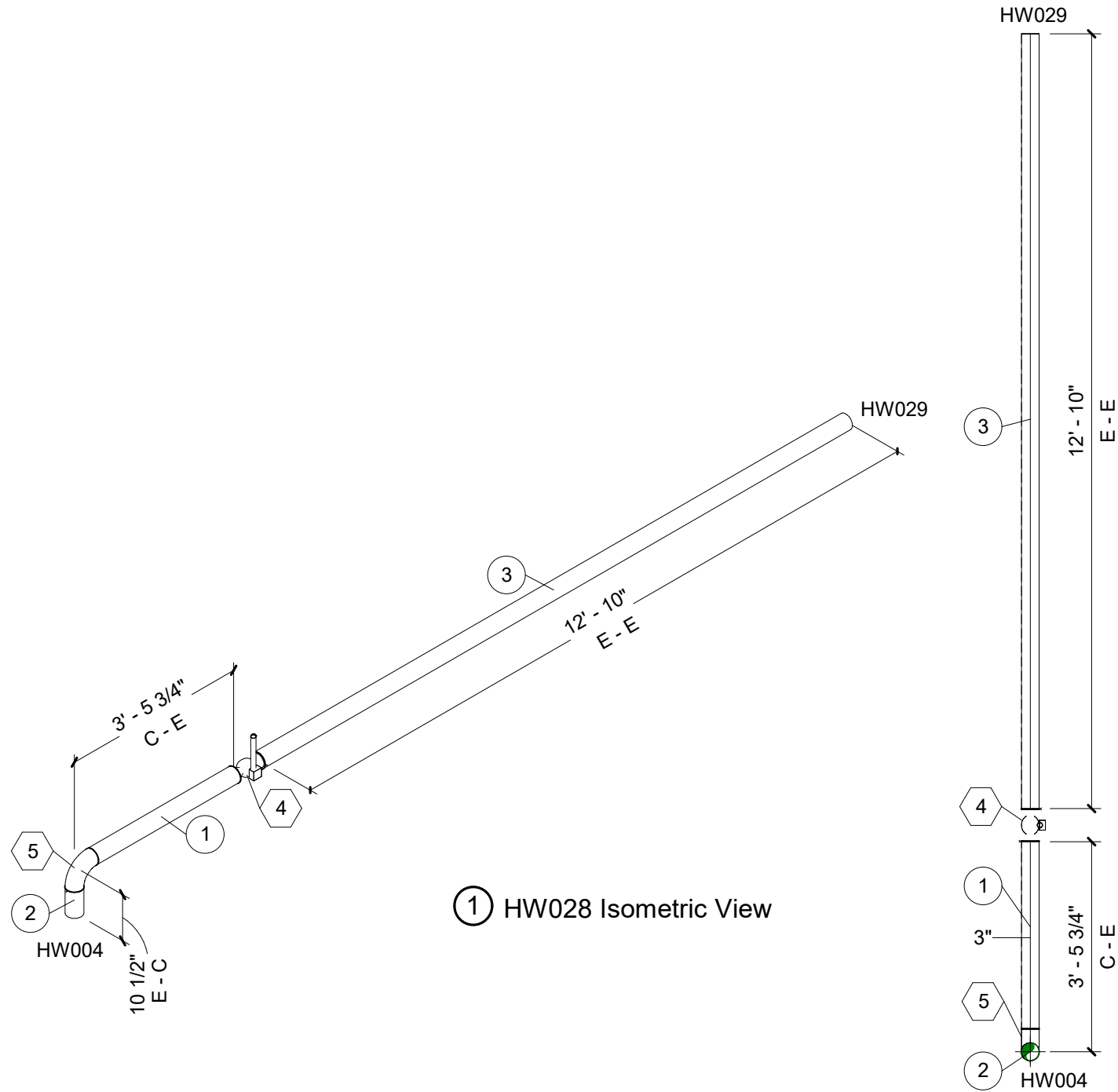
Socket Weld Ball Valve Dimensions Modeled			Tags Legend	
4" Std. Press.	8 7/8" Long O.A.	3/4" Deep Socket	① Pipe Tags ② Fitting and Accessory Tags ③ Joint Tags	
3" Std. Press.	7 7/16" Long O.A.	5/8" Deep Socket		
2" Std. Press.	5 1/2" Long O.A.	5/8" Deep Socket		
3" High Press.	10" Long O.A.	1" Deep Socket		
2" High Press.	6 5/8" Long O.A.	5/8" Deep Socket		
Pipe cut lengths are to bottom of valve socket  High pressure valves are only shown on HP system				
	REVISION SCHEDULE		THIS DOCUMENT IS THE PROPERTY OF I & S GROUP, INC. AND MAY NOT BE USED, COPIED OR DUPLICATED WITHOUT PRIOR WRITTEN CONSENT.  PROJECT  <b>PILGRIM'S PRIDE</b>  <b>PROCESS PIPING</b>  COLD SPRING MINNESOTA	
	DATE	DESCRIPTION		BY
PROJECT NO.	20-24496		TITLE  <b>BUNDLE 3 - SPOOL HW004</b>  SHEET  <b>HW004</b>	
FILE NAME	24496 Mech R20.rvt			
DRAWN BY	CHP			
DESIGNED BY	CHP			
REVIEWED BY	AJE			
ORIGINAL ISSUE DATE	01/05/21			
CLIENT PROJECT NO.				

# Cut List

Tag#	Size	Length	End #1	End #2	Material
1	3"	3' - 1 1/8"	Plain End	Plain End	Sched 10 304 SS
2	3"	5 7/8"	Plain End	Plain End	Sched 10 304 SS
3	3"	12' - 10"	Plain End	Plain End	Sched 10 304 SS

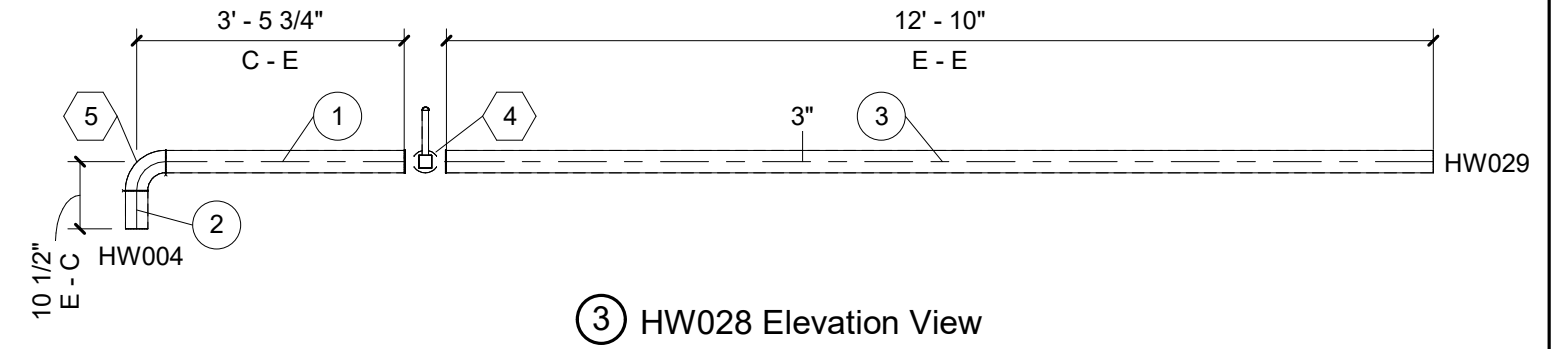
# Bill Of Materials

Tag#	Qty	Size	Description	Material
4	1	3"	ASTM A351 CF8M 1000 psi Ball Valve	Stainless Steel
5	1	3"	Elbow 90 LR	Sched 10 304 SS



① HW028 Isometric View

② HW028 Plan View



③ HW028 Elevation View

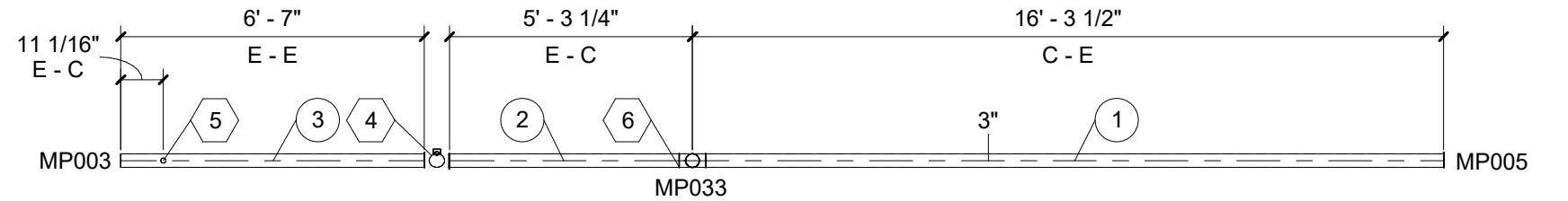
Socket Weld Ball Valve Dimensions Modeled			Tags Legend
4" Std. Press.	8 7/8" Long O.A.	3/4" Deep Socket	① Pipe Tags ② Fitting and Accessory Tags ③ Joint Tags
3" Std. Press.	7 7/16" Long O.A.	5/8" Deep Socket	
2" Std. Press.	5 1/2" Long O.A.	5/8" Deep Socket	
3" High Press.	10" Long O.A.	1" Deep Socket	
2" High Press.	6 5/8" Long O.A.	5/8" Deep Socket	
Pipe cut lengths are to bottom of valve socket			
High pressure valves are only shown on HP system			
	REVISION SCHEDULE DATE DESCRIPTION BY		TITLE
	PROJECT NO. 20-24496 FILE NAME 24496 Mech R20.rvt DRAWN BY CHP DESIGNED BY CHP REVIEWED BY AJE ORIGINAL ISSUE DATE 01/05/21 CLIENT PROJECT NO.		THIS DOCUMENT IS THE PROPERTY OF I & S GROUP, INC. AND MAY NOT BE USED, COPIED OR DUPLICATED WITHOUT PRIOR WRITTEN CONSENT. PROJECT <b>PILGRIM'S PRIDE</b> <b>PROCESS PIPING</b> COLD SPRING MINNESOTA
			SHEET <b>HW028</b>

## Cut List

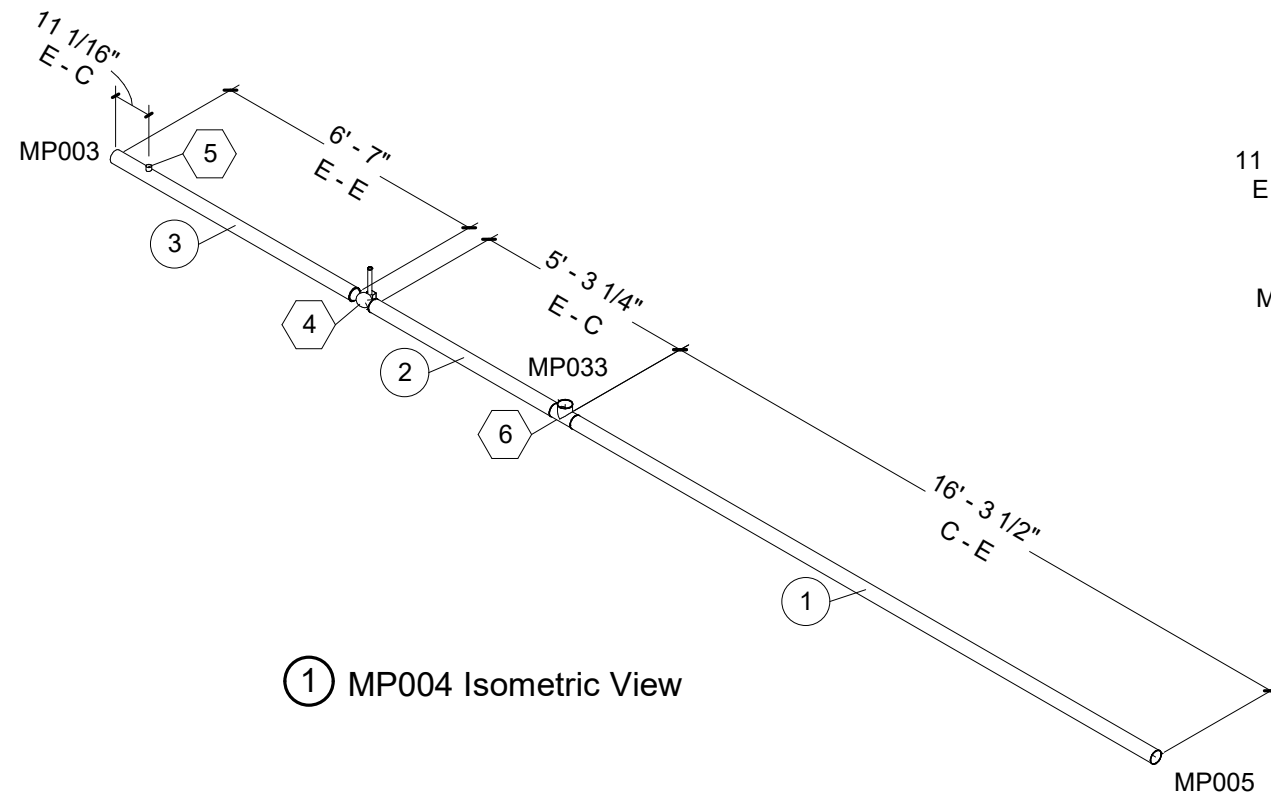
Tag#	Size	Length	End #1	End #2	Material
1	3"	16' - 0"	Plain End	Plain End	Sched 40 304 SS
2	3"	4' - 11 3/4"	Plain End	Plain End	Sched 40 304 SS
3	3"	6' - 7"	Plain End	Plain End	Sched 40 304 SS

## Bill Of Materials

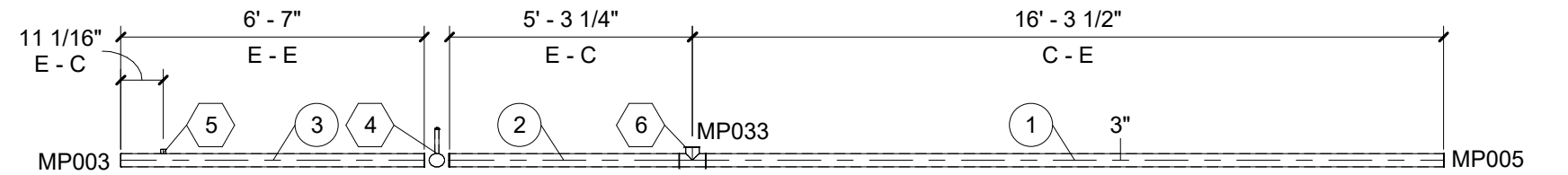
Tag#	Qty	Size	Description	Material
4	1	3"	ASTM A351 CF8M 1000 psi Ball Valve	Stainless Steel
5	1	1"x3"	Olet (1 x 3)	304 SS
6	1	3"	Tee Equal	Sched 40 304 SS



② MP004 Plan View



① MP004 Isometric View



③ MP004 Elevation View

### Socket Weld Ball Valve Dimensions Modeled

4" Std. Press.	8 7/8" Long O.A.	3/4" Deep Socket
3" Std. Press.	7 7/16" Long O.A.	5/8" Deep Socket
2" Std. Press.	5 1/2" Long O.A.	5/8" Deep Socket
3" High Press.	10" Long O.A.	1" Deep Socket
2" High Press.	6 5/8" Long O.A.	5/8" Deep Socket

Pipe cut lengths are to bottom of valve socket

High pressure valves are only shown on HP system

### Tags Legend

- ① Pipe Tags
- ② Fitting and Accessory Tags
- ③ Joint Tags



REVISION SCHEDULE		
DATE	DESCRIPTION	BY

PROJECT NO.	20-24496
FILE NAME	24496 Mech R20.rvt
DRAWN BY	CHP
DESIGNED BY	CHP
REVIEWED BY	AJE
ORIGINAL ISSUE DATE	01/05/21
CLIENT PROJECT NO.	

THIS DOCUMENT IS THE PROPERTY OF I & S GROUP, INC. AND MAY NOT BE USED, COPIED OR DUPLICATED WITHOUT PRIOR WRITTEN CONSENT.

PROJECT

**PILGRIM'S PRIDE  
PROCESS PIPING**

COLD SPRING

MINNESOTA

TITLE

**BUNDLE 3 -  
SPOOL MP004**

SHEET

**MP004**

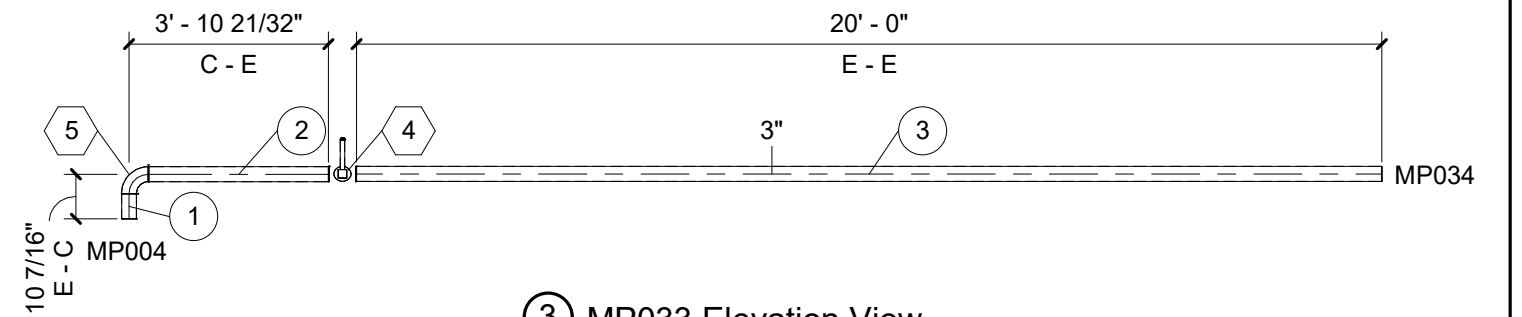
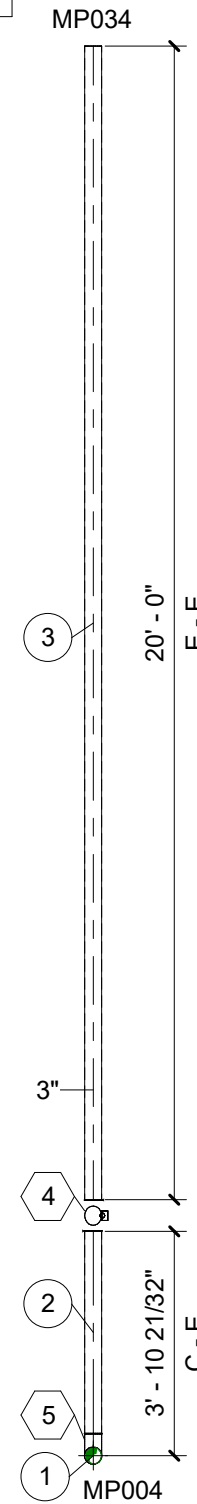
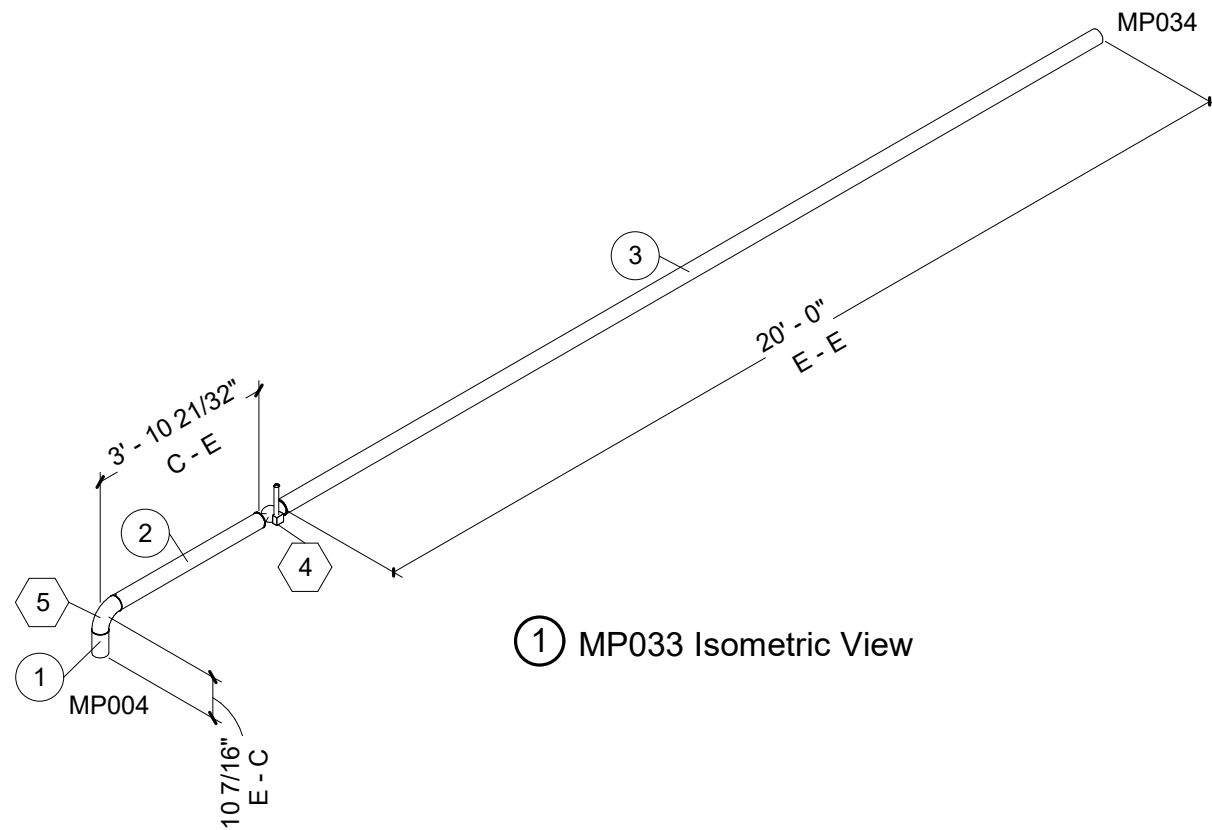


## Cut List

Tag#	Size	Length	End #1	End #2	Material
1	3"	5 13/16"	Plain End	Plain End	Sched 40 304 SS
2	3"	3' - 6 1/32"	Plain End	Plain End	Sched 40 304 SS
3	3"	20' - 0"	Plain End	Plain End	Sched 40 304 SS

## Bill Of Materials

Tag#	Qty	Size	Description	Material
4	1	3"	ASTM A351 CF8M 1000 psi Ball Valve	Stainless Steel
5	1	3"	Elbow 90 LR	Sched 40 304 SS



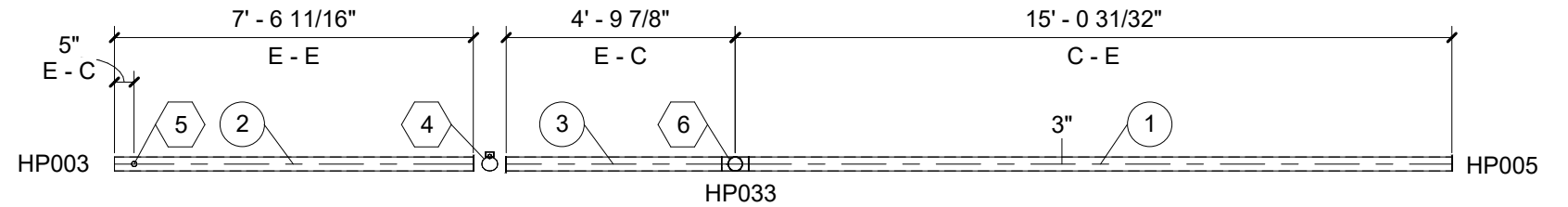
Socket Weld Ball Valve Dimensions Modeled			Tags Legend												
4" Std. Press. 8 7/8" Long O.A.	3/4" Deep Socket	Pipe cut lengths are to bottom of valve socket	① Pipe Tags ② Fitting and Accessory Tags ③ Joint Tags												
3" Std. Press. 7 7/16" Long O.A.	5/8" Deep Socket														
2" Std. Press. 5 1/2" Long O.A.	5/8" Deep Socket	High pressure valves are only shown on HP system													
3" High Press. 10" Long O.A.	1" Deep Socket														
2" High Press. 6 5/8" Long O.A.	5/8" Deep Socket														
	REVISION SCHEDULE	THIS DOCUMENT IS THE PROPERTY OF I & S GROUP, INC. AND MAY NOT BE USED, COPIED OR DUPLICATED WITHOUT PRIOR WRITTEN CONSENT.													
	<table border="1" style="width: 100%; border-collapse: collapse;"> <thead> <tr> <th>DATE</th> <th>DESCRIPTION</th> <th>BY</th> </tr> </thead> <tbody> <tr><td> </td><td> </td><td> </td></tr> <tr><td> </td><td> </td><td> </td></tr> <tr><td> </td><td> </td><td> </td></tr> </tbody> </table>	DATE	DESCRIPTION	BY										PROJECT	TITLE
DATE	DESCRIPTION	BY													
PROJECT NO. 20-24496 FILE NAME 24496 Mech R20.rvt DRAWN BY CHP DESIGNED BY CHP REVIEWED BY AJE ORIGINAL ISSUE DATE 01/05/21 CLIENT PROJECT NO.	PROJECT <b>PILGRIM'S PRIDE</b> <b>PROCESS PIPING</b>	<b>BUNDLE 3 - SPOOL MP033</b>													
	COLD SPRING MINNESOTA	SHEET <b>MP033</b>													

## Cut List

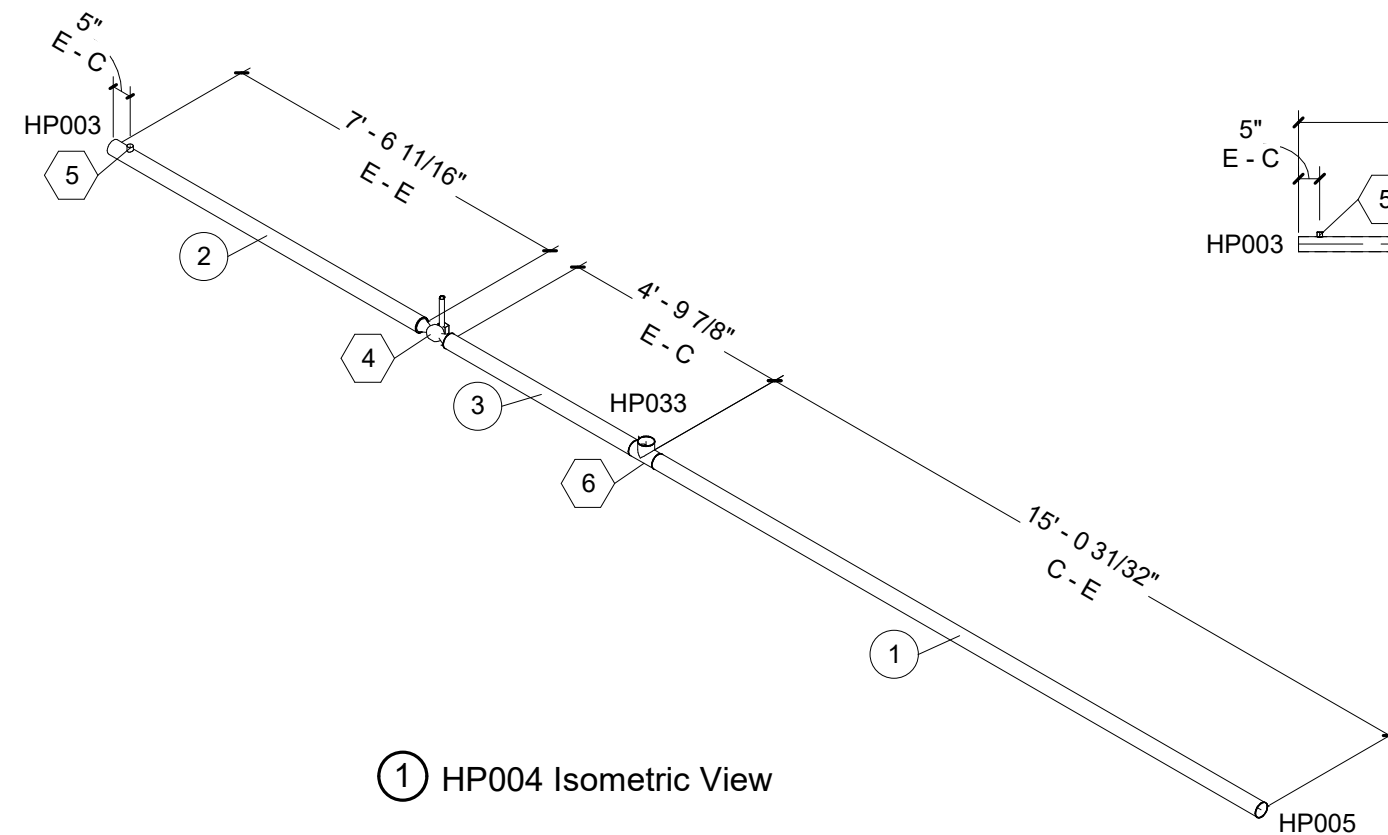
Tag#	Size	Length	End #1	End #2	Material
1	3"	14' - 9 7/16"	Plain End	Plain End	Sched 40 304 SS
2	3"	7' - 6 11/16"	Plain End	Plain End	Sched 40 304 SS
3	3"	4' - 6 3/8"	Plain End	Plain End	Sched 40 304 SS

## Bill Of Materials

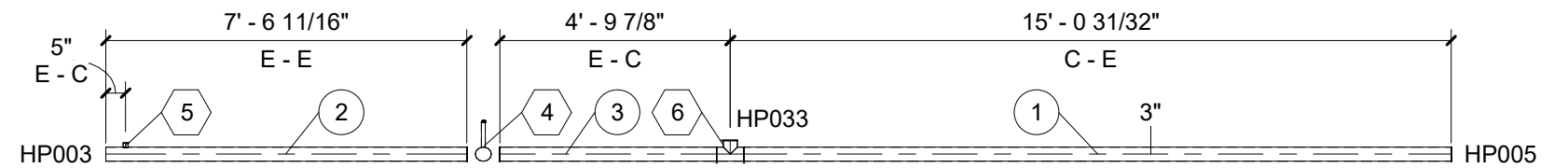
Tag#	Qty	Size	Description	Material
4	1	3"	ASME/ANSI B16.34 2500 psi Ball Valve	Stainless Steel
5	1	1"x3"	Olet (1 x 3)	304 SS
6	1	3"	Tee Equal	Sched 40 304 SS



② HP004 Plan View



① HP004 Isometric View



③ HP004 Elevation View

### Socket Weld Ball Valve Dimensions Modeled

4" Std. Press.	8 7/8" Long O.A.	3/4" Deep Socket
3" Std. Press.	7 7/16" Long O.A.	5/8" Deep Socket
2" Std. Press.	5 1/2" Long O.A.	5/8" Deep Socket
3" High Press.	10" Long O.A.	1" Deep Socket
2" High Press.	6 5/8" Long O.A.	5/8" Deep Socket

Pipe cut lengths are to bottom of valve socket

High pressure valves are only shown on HP system

### Tags Legend

- ① Pipe Tags
- ② Fitting and Accessory Tags
- ③ Joint Tags



REVISION SCHEDULE		
DATE	DESCRIPTION	BY

PROJECT NO.	20-24496
FILE NAME	24496 Mech R20.rvt
DRAWN BY	CHP
DESIGNED BY	CHP
REVIEWED BY	AJE
ORIGINAL ISSUE DATE	01/05/21
CLIENT PROJECT NO.	

THIS DOCUMENT IS THE PROPERTY OF I & S GROUP, INC. AND MAY NOT BE USED, COPIED OR DUPLICATED WITHOUT PRIOR WRITTEN CONSENT.

PROJECT  
**PILGRIM'S PRIDE**  
**PROCESS PIPING**

COLD SPRING MINNESOTA

TITLE

**BUNDLE 3 - SPOOL HP004**

SHEET

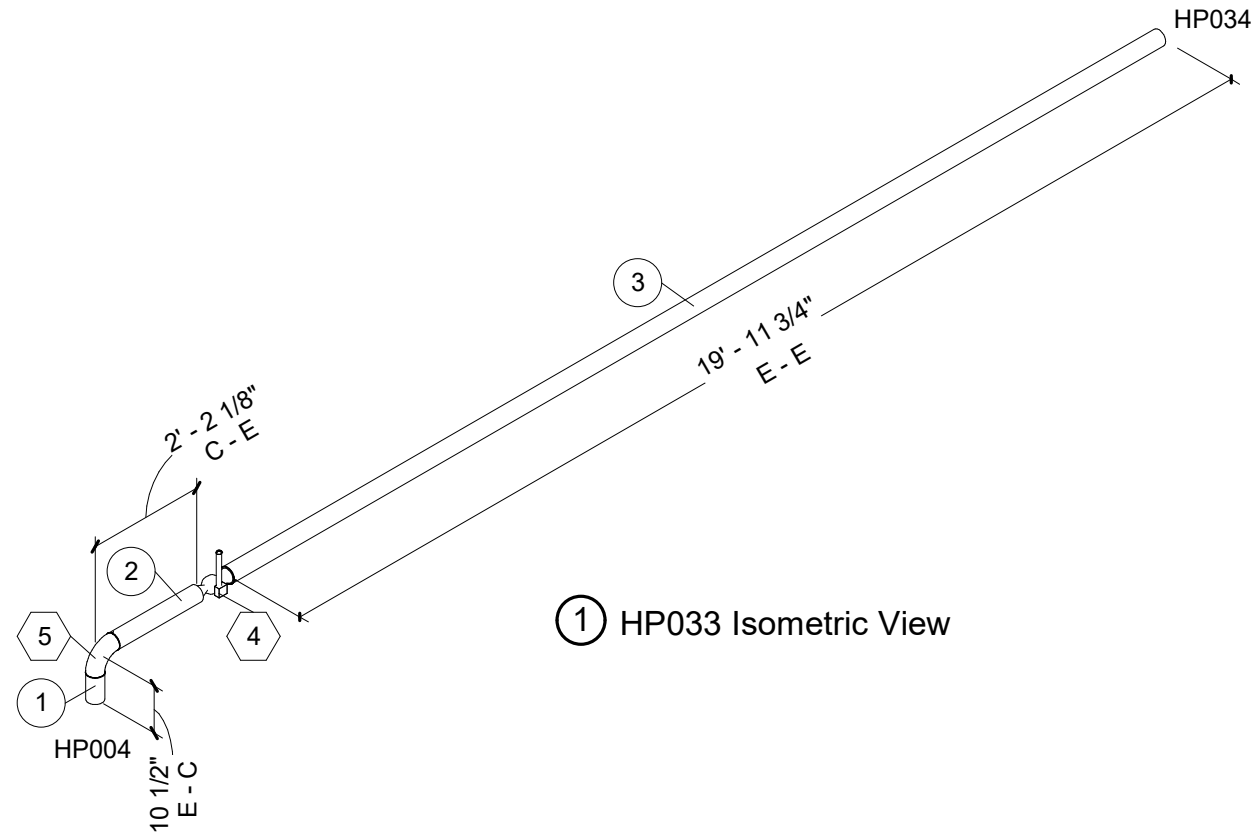
**HP004**

# Cut List

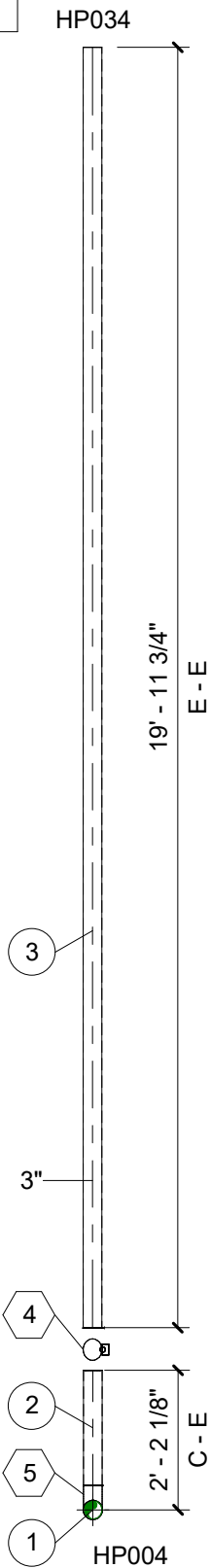
Tag#	Size	Length	End #1	End #2	Material
1	3"	5 7/8"	Plain End	Plain End	Sched 40 304 SS
2	3"	1' - 9 1/2"	Plain End	Plain End	Sched 40 304 SS
3	3"	19' - 11 3/4"	Plain End	Plain End	Sched 40 304 SS

# Bill Of Materials

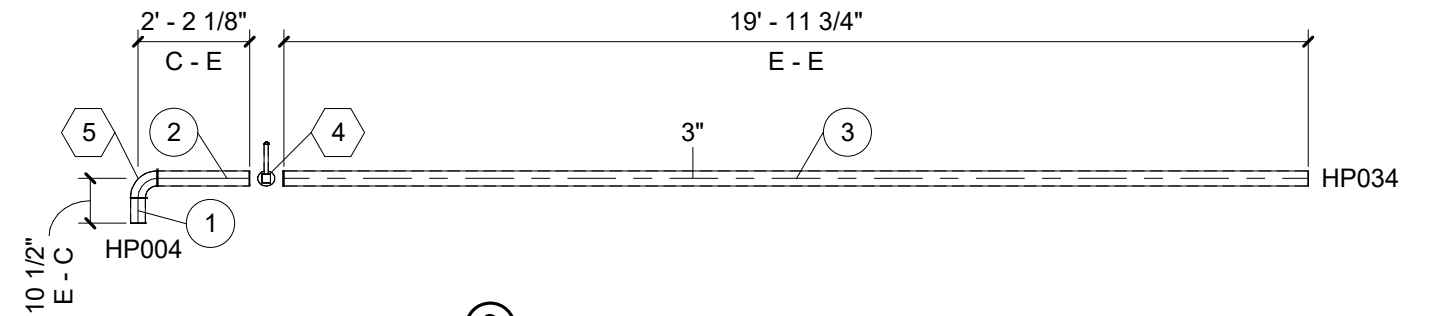
Tag#	Qty	Size	Description	Material
4	1	3"	ASME/ANSI B16.34 2500 psi Ball Valve	Stainless Steel
5	1	3"	Elbow 90 LR	Sched 40 304 SS




① HP033 Isometric View



② HP033 Plan View



③ HP033 Elevation View

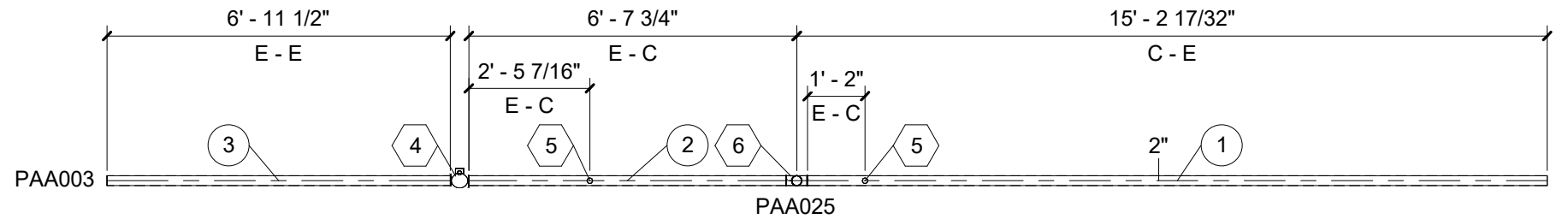
Socket Weld Ball Valve Dimensions Modeled			Tags Legend															
4" Std. Press.	8 7/8" Long O.A.	3/4" Deep Socket	Pipe cut lengths are to bottom of valve socket															
3" Std. Press.	7 7/16" Long O.A.	5/8" Deep Socket																
2" Std. Press.	5 1/2" Long O.A.	5/8" Deep Socket	High pressure valves are only shown on HP system															
3" High Press.	10" Long O.A.	1" Deep Socket																
2" High Press.	6 5/8" Long O.A.	5/8" Deep Socket																
			<p>① Pipe Tags</p> <p>② Fitting and Accessory Tags</p> <p>③ Joint Tags</p>															
<table border="1"> <thead> <tr> <th colspan="3">REVISION SCHEDULE</th> </tr> <tr> <th>DATE</th> <th>DESCRIPTION</th> <th>BY</th> </tr> </thead> <tbody> <tr><td> </td><td> </td><td> </td></tr> <tr><td> </td><td> </td><td> </td></tr> <tr><td> </td><td> </td><td> </td></tr> </tbody> </table>		REVISION SCHEDULE			DATE	DESCRIPTION	BY										<p>THIS DOCUMENT IS THE PROPERTY OF I &amp; S GROUP, INC. AND MAY NOT BE USED, COPIED OR DUPLICATED WITHOUT PRIOR WRITTEN CONSENT.</p> <p>PROJECT</p> <p><b>PILGRIM'S PRIDE</b></p> <p><b>PROCESS PIPING</b></p> <p>COLD SPRING MINNESOTA</p>	<p>TITLE</p> <p><b>BUNDLE 3 - SPOOL HP033</b></p> <p>SHEET</p> <p><b>HP033</b></p>
REVISION SCHEDULE																		
DATE	DESCRIPTION	BY																
<p>PROJECT NO. 20-24496</p> <p>FILE NAME 24496 Mech R20.rvt</p> <p>DRAWN BY CHP</p> <p>DESIGNED BY CHP</p> <p>REVIEWED BY AJE</p> <p>ORIGINAL ISSUE DATE 01/05/21</p> <p>CLIENT PROJECT NO.</p>																		

## Cut List

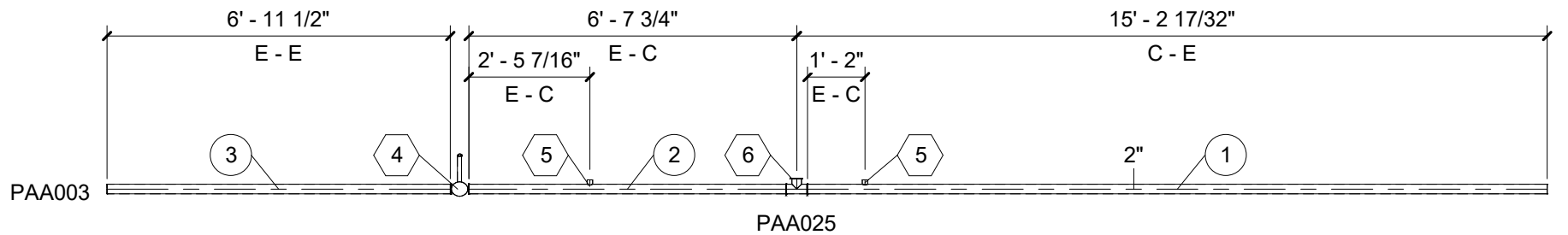
Tag#	Size	Length	End #1	End #2	Material
1	2"	14' - 11 29/32"	Plain End	Plain End	Sched 40 304 SS
2	2"	6' - 5 1/8"	Plain End	Plain End	Sched 40 304 SS
3	2"	6' - 11 1/2"	Plain End	Plain End	Sched 40 304 SS

## Bill Of Materials

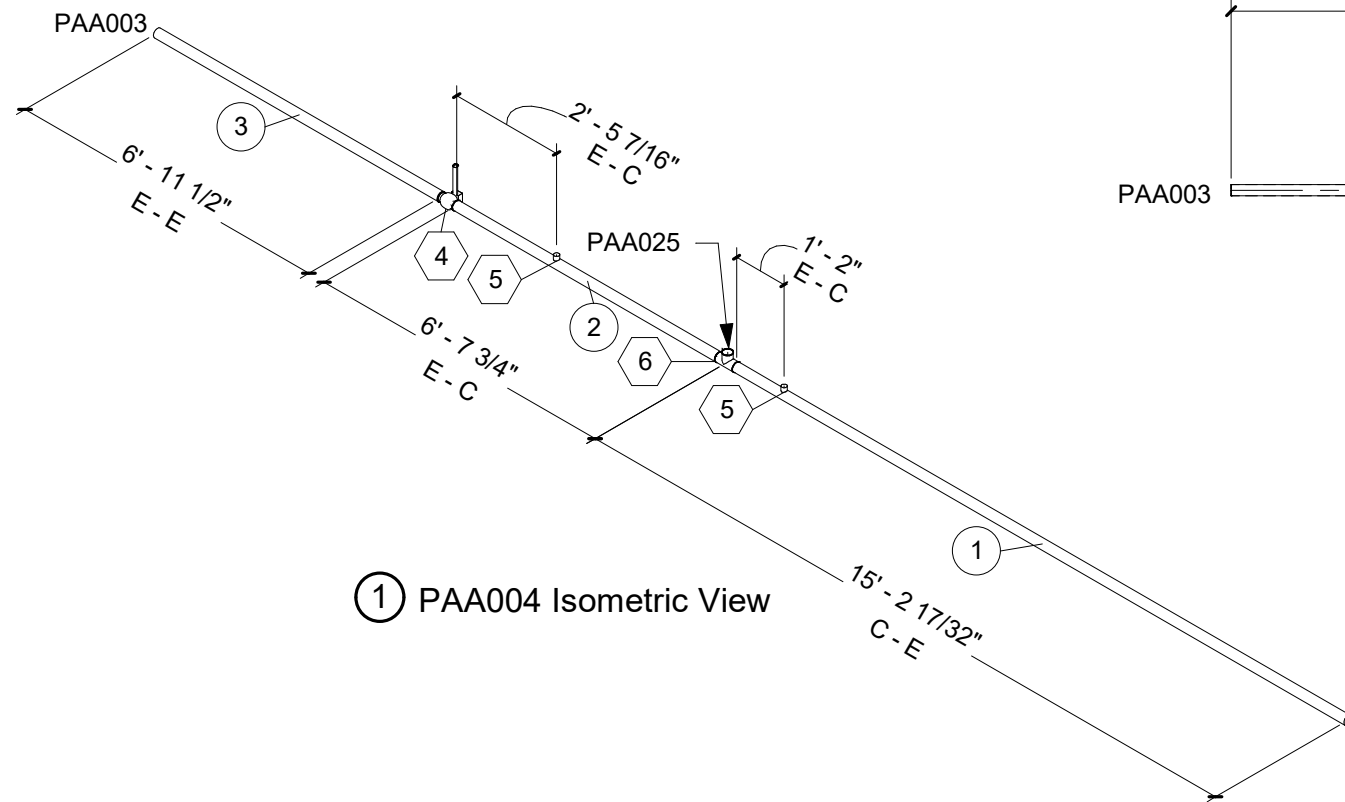
Tag#	Qty	Size	Description	Material
4	1	2"	ASTM A351 CF8M 1000 psi Ball Valve	Stainless Steel
5	2	1"x2"	Olet (1 x 2)	304 SS
6	1	2"	Tee Equal	Sched 40 304 SS



② PAA004 Plan View



③ PAA004 Elevation View



① PAA004 Isometric View

### Socket Weld Ball Valve Dimensions Modeled

4" Std. Press.	8 7/8" Long O.A.	3/4" Deep Socket
3" Std. Press.	7 7/16" Long O.A.	5/8" Deep Socket
2" Std. Press.	5 1/2" Long O.A.	5/8" Deep Socket
3" High Press.	10" Long O.A.	1" Deep Socket
2" High Press.	6 5/8" Long O.A.	5/8" Deep Socket

Pipe cut lengths are to bottom of valve socket

High pressure valves are only shown on HP system

### Tags Legend

- ① Pipe Tags
- ② Fitting and Accessory Tags
- ③ Joint Tags



REVISION SCHEDULE		
DATE	DESCRIPTION	BY

PROJECT NO.	20-24496
FILE NAME	24496 Mech R20.rvt
DRAWN BY	CHP
DESIGNED BY	CHP
REVIEWED BY	AJE
ORIGINAL ISSUE DATE	01/05/21
CLIENT PROJECT NO.	

THIS DOCUMENT IS THE PROPERTY OF I & S GROUP, INC. AND MAY NOT BE USED, COPIED OR DUPLICATED WITHOUT PRIOR WRITTEN CONSENT.

PROJECT

**PILGRIM'S PRIDE**  
**PROCESS PIPING**

COLD SPRING MINNESOTA

TITLE

**BUNDLE 3 -**  
**SPOOL PAA004**

SHEET

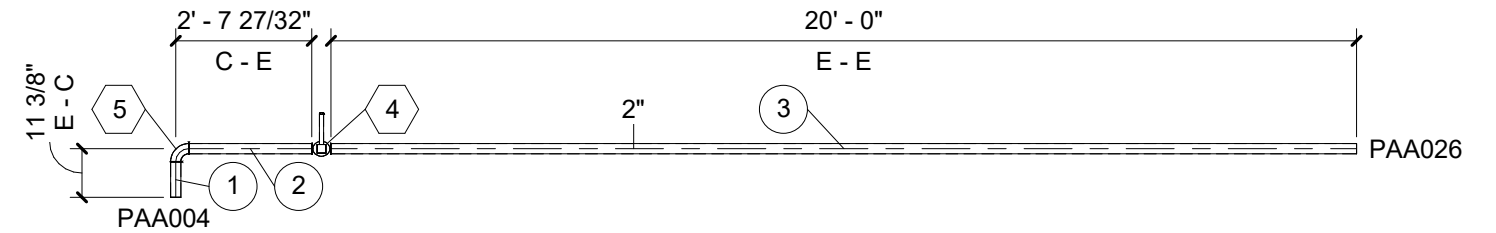
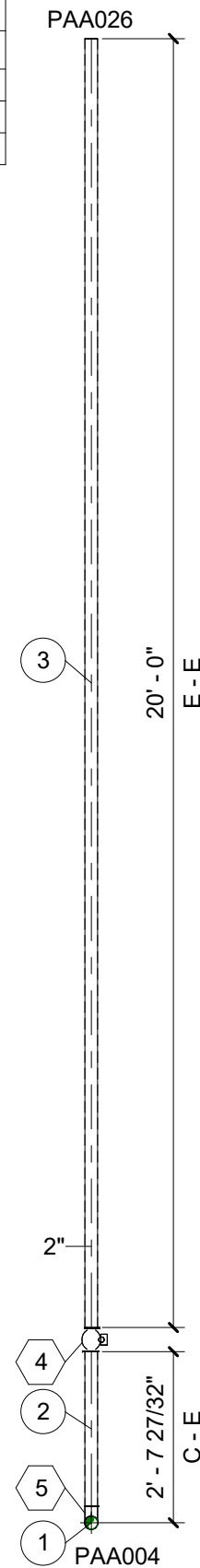
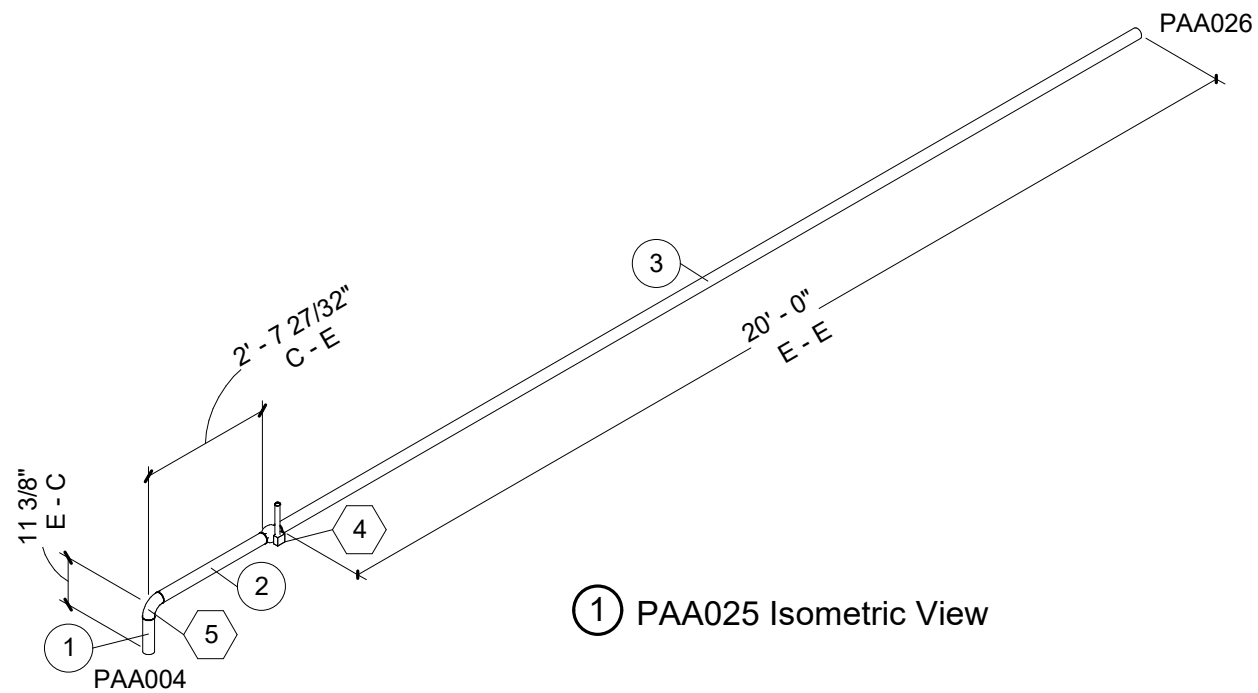
**PAA004**

## Cut List

Tag#	Size	Length	End #1	End #2	Material
1	2"	8 1/4"	Plain End	Plain End	Sched 40 304 SS
2	2"	2' - 4 23/32"	Plain End	Plain End	Sched 40 304 SS
3	2"	20' - 0"	Plain End	Plain End	Sched 40 304 SS

## Bill Of Materials

Tag#	Qty	Size	Description	Material
4	1	2"	ASTM A351 CF8M 1000 psi Ball Valve	Stainless Steel
5	1	2"	Elbow 90 LR	Sched 40 304 SS



### Socket Weld Ball Valve Dimensions Modeled

4" Std. Press.	8 7/8" Long O.A.	3/4" Deep Socket
3" Std. Press.	7 7/16" Long O.A.	5/8" Deep Socket
2" Std. Press.	5 1/2" Long O.A.	5/8" Deep Socket
3" High Press.	10" Long O.A.	1" Deep Socket
2" High Press.	6 5/8" Long O.A.	5/8" Deep Socket

Pipe cut lengths are to bottom of valve socket

High pressure valves are only shown on HP system

### Tags Legend

- ① Pipe Tags
- ② Fitting and Accessory Tags
- ③ Joint Tags



REVISION SCHEDULE		
DATE	DESCRIPTION	BY

PROJECT NO.	20-24496
FILE NAME	24496 Mech R20.rvt
DRAWN BY	CHP
DESIGNED BY	CHP
REVIEWED BY	AJE
ORIGINAL ISSUE DATE	01/05/21
CLIENT PROJECT NO.	

THIS DOCUMENT IS THE PROPERTY OF I & S GROUP, INC. AND MAY NOT BE USED, COPIED OR DUPLICATED WITHOUT PRIOR WRITTEN CONSENT.

PROJECT

**PILGRIM'S PRIDE**  
**PROCESS PIPING**

COLD SPRING

MINNESOTA

TITLE

**BUNDLE 3 -**  
**SPOOL PAA025**

SHEET

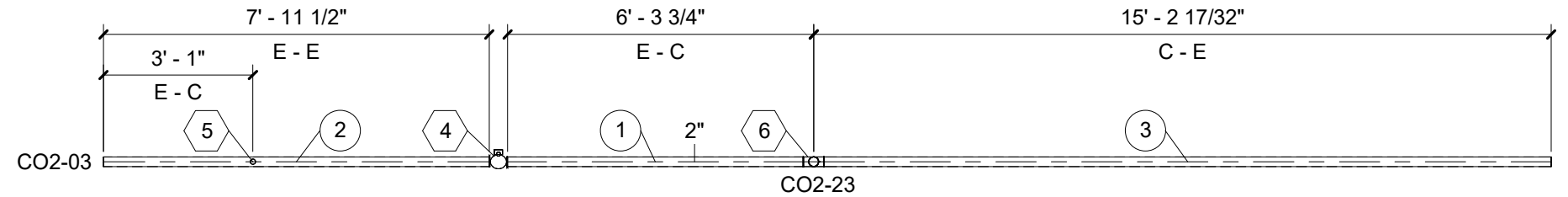
**PAA025**

## Cut List

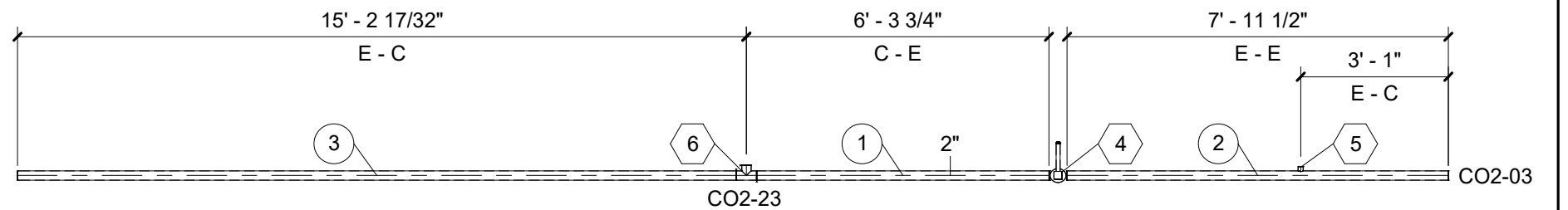
Tag#	Size	Length	End #1	End #2	Material
1	2"	6' - 1 1/8"	Plain End	Plain End	Sched 10 304 SS
2	2"	7' - 11 1/2"	Plain End	Plain End	Sched 10 304 SS
3	2"	14' - 11 29/32"	Plain End	Plain End	Sched 10 304 SS

## Bill Of Materials

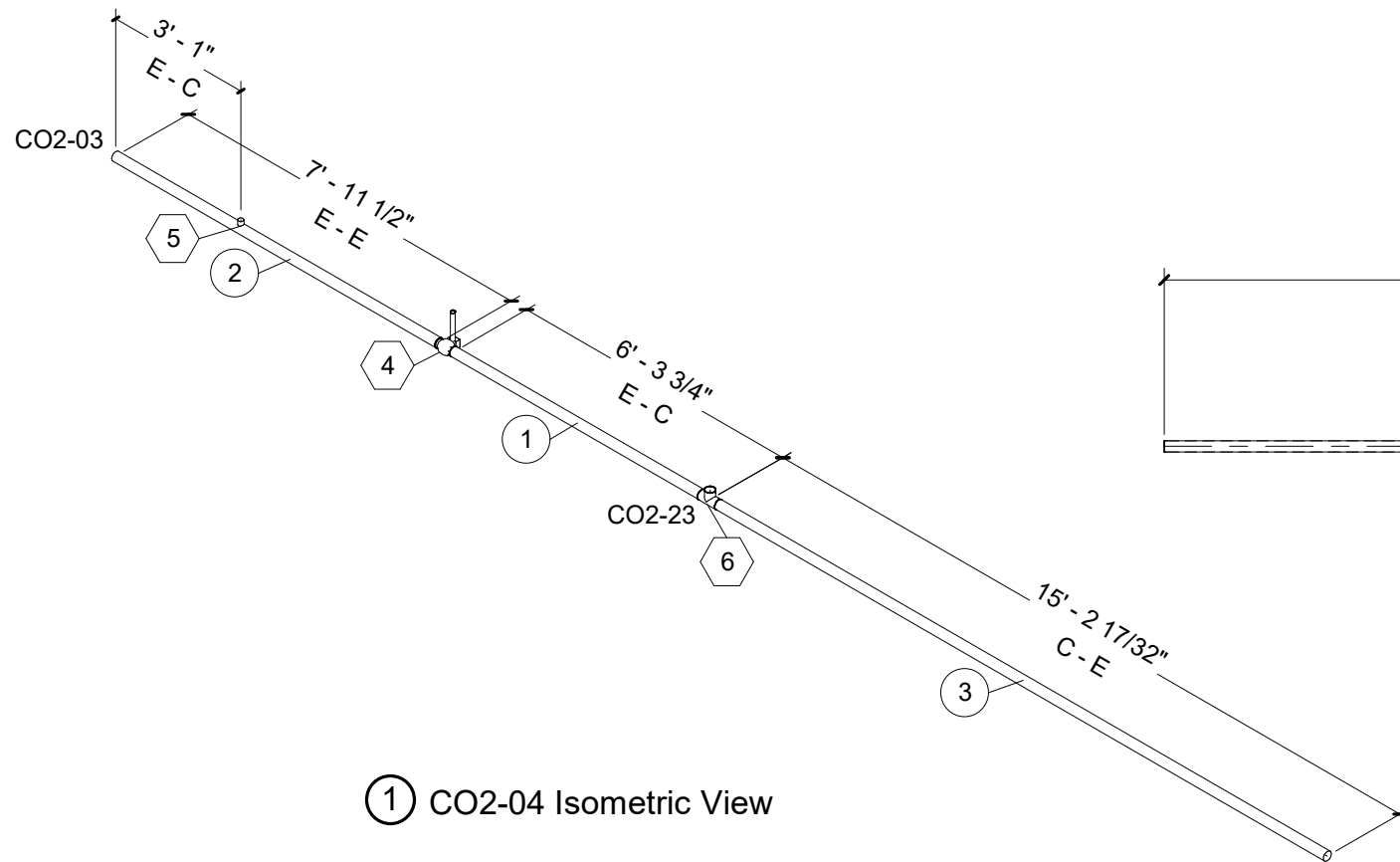
Tag#	Qty	Size	Description	Material
4	1	2"	ASTM A351 CF8M 1000 psi Ball Valve	Stainless Steel
5	1	1"x2"	Olet (1 x 2)	304 SS
6	1	2"	Tee Equal	Sched 10 304 SS



② CO2-04 Plan View



③ CO2-04 Elevation View



① CO2-04 Isometric View

### Socket Weld Ball Valve Dimensions Modeled

4" Std. Press.	8 7/8" Long O.A.	3/4" Deep Socket
3" Std. Press.	7 7/16" Long O.A.	5/8" Deep Socket
2" Std. Press.	5 1/2" Long O.A.	5/8" Deep Socket
3" High Press.	10" Long O.A.	1" Deep Socket
2" High Press.	6 5/8" Long O.A.	5/8" Deep Socket

Pipe cut lengths are to bottom of valve socket

High pressure valves are only shown on HP system

### Tags Legend

- ① Pipe Tags
- ② Fitting and Accessory Tags
- ③ Joint Tags



REVISION SCHEDULE		
DATE	DESCRIPTION	BY

PROJECT NO.	20-24496
FILE NAME	24496 Mech R20.rvt
DRAWN BY	CHP
DESIGNED BY	CHP
REVIEWED BY	AJE
ORIGINAL ISSUE DATE	01/05/21
CLIENT PROJECT NO.	

THIS DOCUMENT IS THE PROPERTY OF I & S GROUP, INC. AND MAY NOT BE USED, COPIED OR DUPLICATED WITHOUT PRIOR WRITTEN CONSENT.

PROJECT  
**PILGRIM'S PRIDE**  
**PROCESS PIPING**

COLD SPRING MINNESOTA

TITLE

**BUNDLE 3 - SPOOL CO2-04**

SHEET

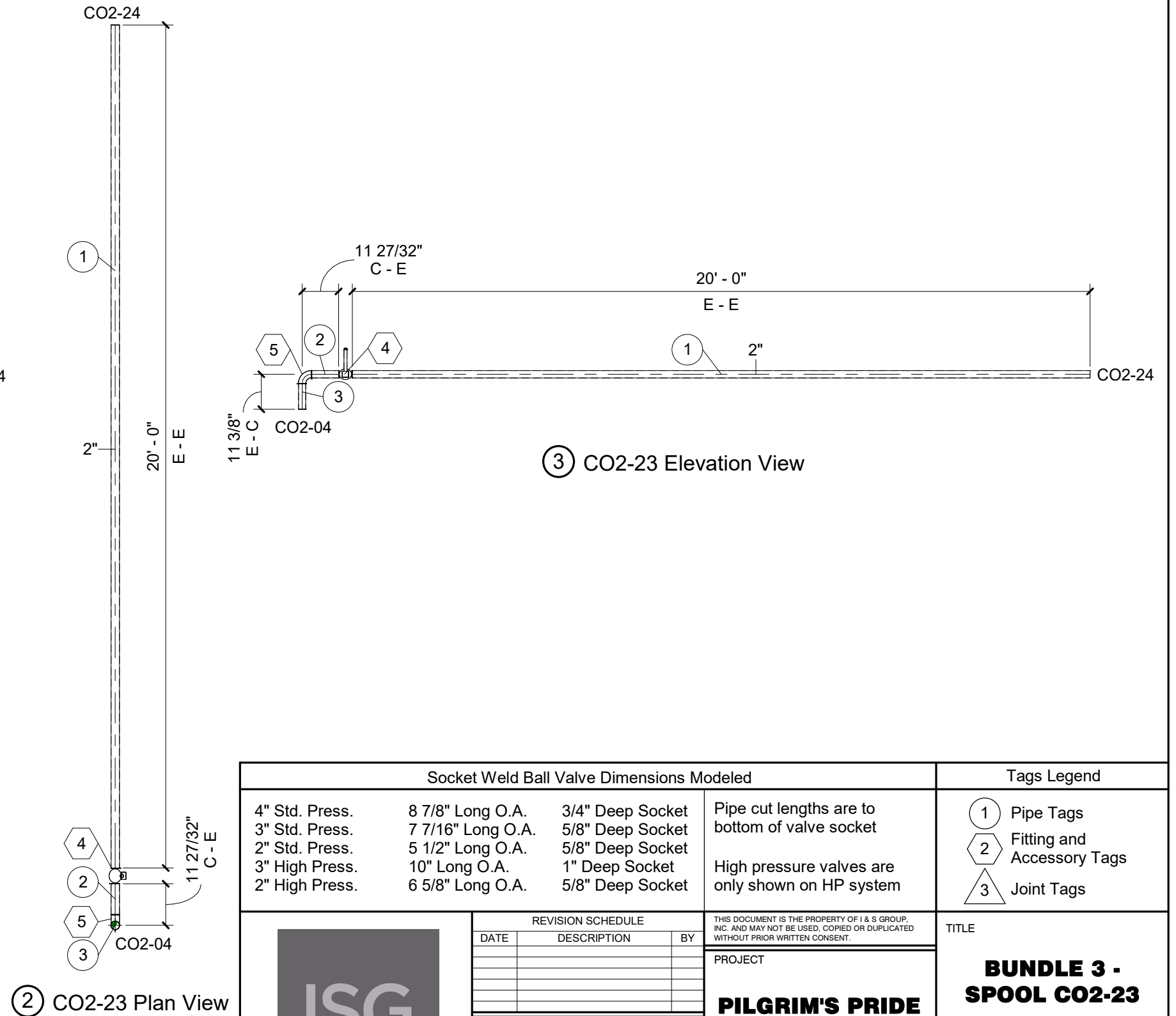
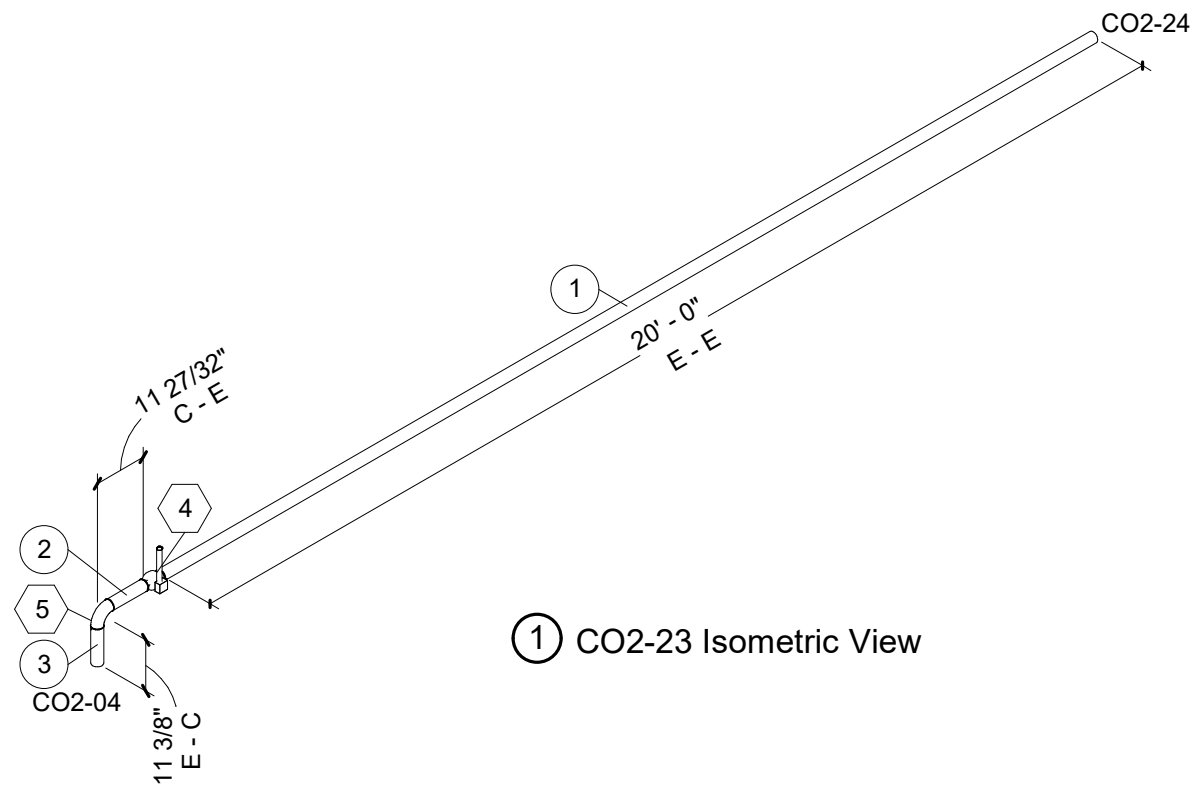
**CO2-04**


# Cut List

Tag#	Size	Length	End #1	End #2	Material
1	2"	20' - 0"	Plain End	Plain End	Sched 10 304 SS
2	2"	8 23/32"	Plain End	Plain End	Sched 10 304 SS
3	2"	8 1/4"	Plain End	Plain End	Sched 10 304 SS

# Bill Of Materials

Tag#	Qty	Size	Description	Material
4	1	2"	ASTM A351 CF8M 1000 psi Ball Valve	Stainless Steel
5	1	2"	Elbow 90 LR	Sched 10 304 SS



Socket Weld Ball Valve Dimensions Modeled			Tags Legend												
4" Std. Press.	8 7/8" Long O.A.	3/4" Deep Socket	① Pipe Tags ② Fitting and Accessory Tags ③ Joint Tags												
3" Std. Press.	7 7/16" Long O.A.	5/8" Deep Socket													
2" Std. Press.	5 1/2" Long O.A.	5/8" Deep Socket	Pipe cut lengths are to bottom of valve socket  High pressure valves are only shown on HP system												
3" High Press.	10" Long O.A.	1" Deep Socket													
2" High Press.	6 5/8" Long O.A.	5/8" Deep Socket													
	REVISION SCHEDULE <table border="1"> <thead> <tr> <th>DATE</th> <th>DESCRIPTION</th> <th>BY</th> </tr> </thead> <tbody> <tr><td> </td><td> </td><td> </td></tr> <tr><td> </td><td> </td><td> </td></tr> <tr><td> </td><td> </td><td> </td></tr> </tbody> </table>		DATE	DESCRIPTION	BY										THIS DOCUMENT IS THE PROPERTY OF I & S GROUP, INC. AND MAY NOT BE USED, COPIED OR DUPLICATED WITHOUT PRIOR WRITTEN CONSENT.  PROJECT <b>PILGRIM'S PRIDE</b>  <b>PROCESS PIPING</b>  COLD SPRING MINNESOTA
	DATE	DESCRIPTION	BY												
PROJECT NO. 20-24496 FILE NAME 24496 Mech R20.rvt DRAWN BY CHP DESIGNED BY CHP REVIEWED BY AJE ORIGINAL ISSUE DATE 01/05/21 CLIENT PROJECT NO.		TITLE <b>BUNDLE 3 - SPOOL CO2-23</b>  SHEET <b>CO2-23</b>													